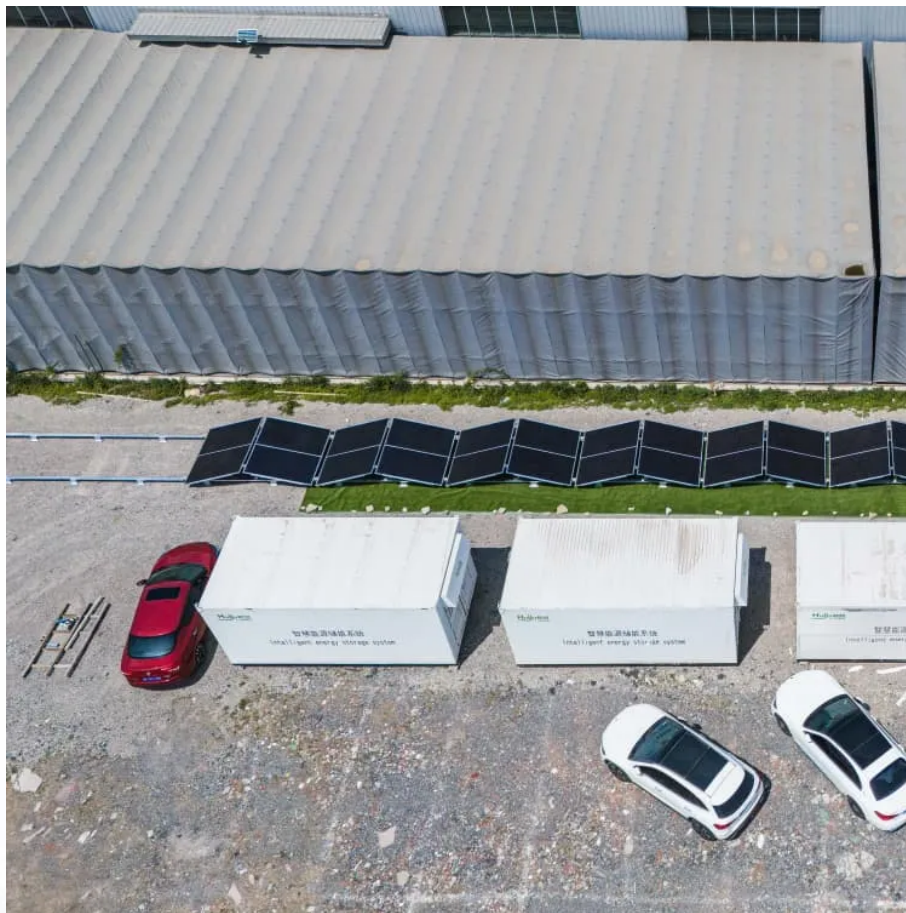


A-Core Container

20 degree energy storage power supply



Overview

It typically is used to stabilize to some degree power grids, to help them stay on the grid frequency, and to serve as a short-term compensation storage. Overview A flywheel-storage power system uses a for , (see) and can be a comparatively small storage facility with a peak power of up to 20 MW. It typically is used to sta.

In , operates in a flywheel storage power plant with 200 flywheels of 25 kWh capacity and 100 kW of power. Ganged together this gives 5 MWh capacity and 20 MW of power. Th.

China has the largest grid-scale flywheel energy storage plant in the world with 30 MW capacity. The system was connected to the grid in 2024 and it was the first such system in China. In the Unite.

20 degree energy storage power supply

Contact Us

For catalog requests, pricing, or partnerships, please visit:
<https://a-core.pl>