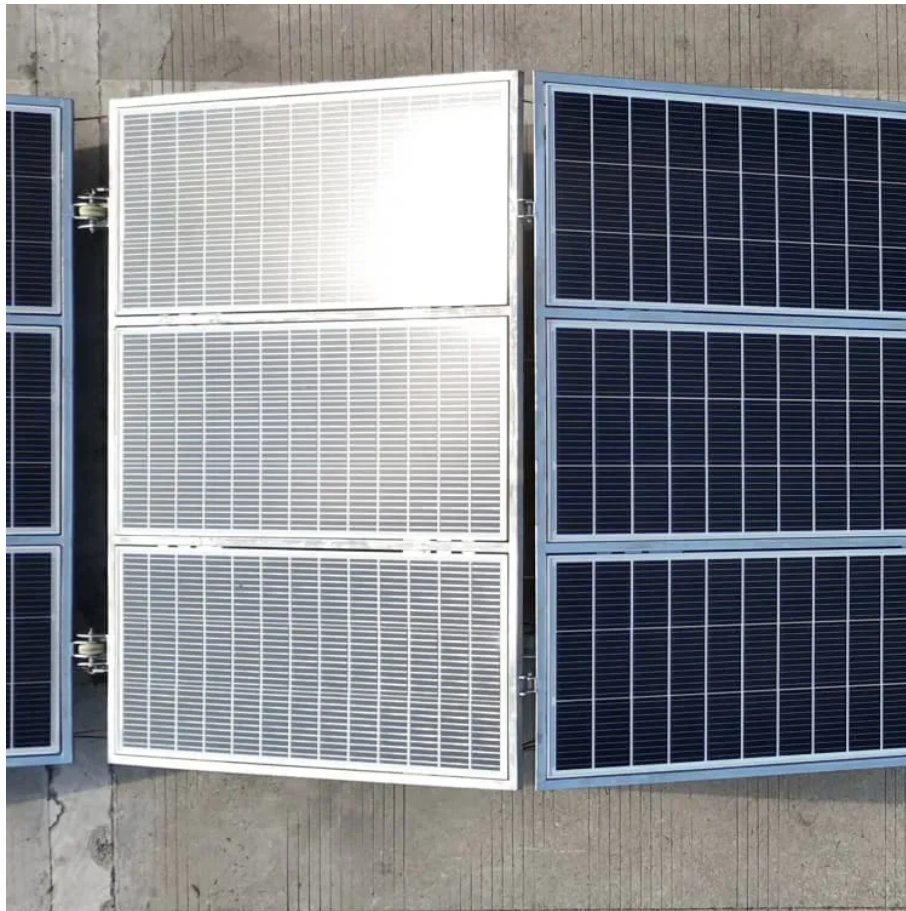


A-Core Container

220V to 14V inverter



Overview

What is a 220V power inverter?

A 220 volt power inverter converts direct current to conventional alternating current. It can be used to run electronic equipment when there is no normal power supply. Sam Stores stocks a wide range of power inverters to match your needs.

How does a 12V to 220V inverter work?

This 12V to 220V inverter works by using a 555 timer configured to 50Hz in astable multivibrator mode to generate square waves. These waves are then carried to the transformer, which steps up the voltage levels. The gain of the inverter depends upon the properties of the transformer, and the transformer's current rating must be greater than 2A.

How do I get 220V from a 110 volt inverter?

You would have to get a step-up transformer (perhaps auto-wound for lower costs) to get 220 from a 110 inverter. Re: 220v from two inverters?

Aloha, Can I parallel two of the same MSW inverters @ 110v each and get 220v single phase?

If so, then would I tie the two neutrals together?

Reference my system below. thanks.

Can a 240 volt inverter be used with two 240V inverters?

You could use two inverters and tie their neutrals together. Most of better ones won't care about this. The trick is if you have any 240vac loads they could have any voltage from 0 to 240v as the two inverters won't likely be in sync or stay in sync with one another, even matching ones. I would go the T240 / transformer route.

How many powmr 5000W hybrid inverters are left?

Only 16 PowMr 5000W hybrid inverters with 80A MPPT Charge Controller are left in stock - order soon. These inverters offer a pure sine wave inverter DC to 220-230VAC, support utility/generator/solar charge, and come with a Bluetooth LCD USB control. They are suitable for 48v Lead-Acid and Lithium batteries.

220V to 14V inverter

Contact Us

For catalog requests, pricing, or partnerships, please visit:
<https://a-core.pl>