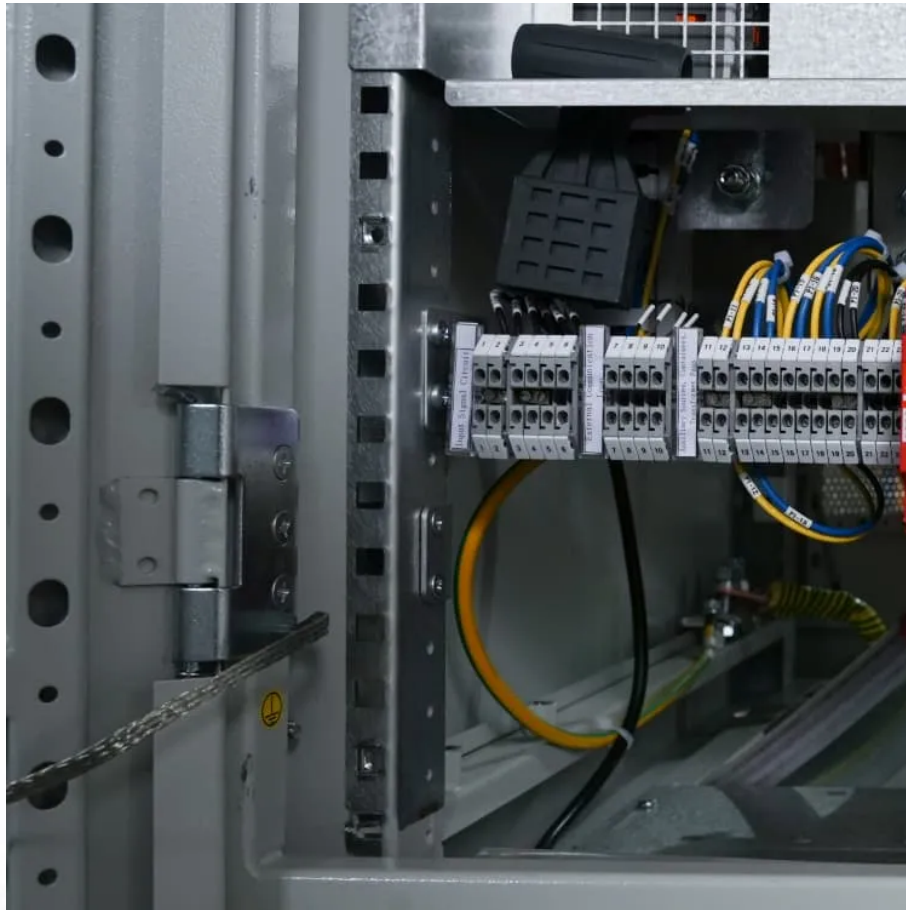


## A-Core Container

# Buy lifespan of outdoor power supply



## Overview

---

Portable power stations typically last between 3 to 10 years. Their lifespan depends on usage, maintenance, and battery quality. These devices are becoming essential for outdoor adventures and emergency situations. They offer a reliable source of energy when traditional power sources aren't available.

Portable power stations typically last between 3 to 10 years. Their lifespan depends on usage, maintenance, and battery quality. These devices are becoming essential for outdoor adventures and emergency situations. They offer a reliable source of energy when traditional power sources aren't available.

The typical lifetime of a portable outdoor power supply is approximately 1000 to 3000 cycles. The number of cycles is the unit used to indicate the life span of an outdoor power supply, with charge + discharge counting as one cycle.

If the outdoor power supply is used once per residence, the estimated service life is about 19 years. (1000 times - 48 times a year = about 20 years). If used on a workday cycle, the estimated lifespan is approximately 4 years. (Use 1000 times a year - 240 times a year = about 4 years).

In summary, while the typical lifespan of a power supply is around 5 to 10 years, this can vary based on the quality of the power supply, the conditions it operates in, and how it is used. High-quality power supplies that are well-maintained and used under optimal conditions can last even longer.

## Buy lifespan of outdoor power supply

---

## Contact Us

---

For catalog requests, pricing, or partnerships, please visit:  
<https://a-core.pl>