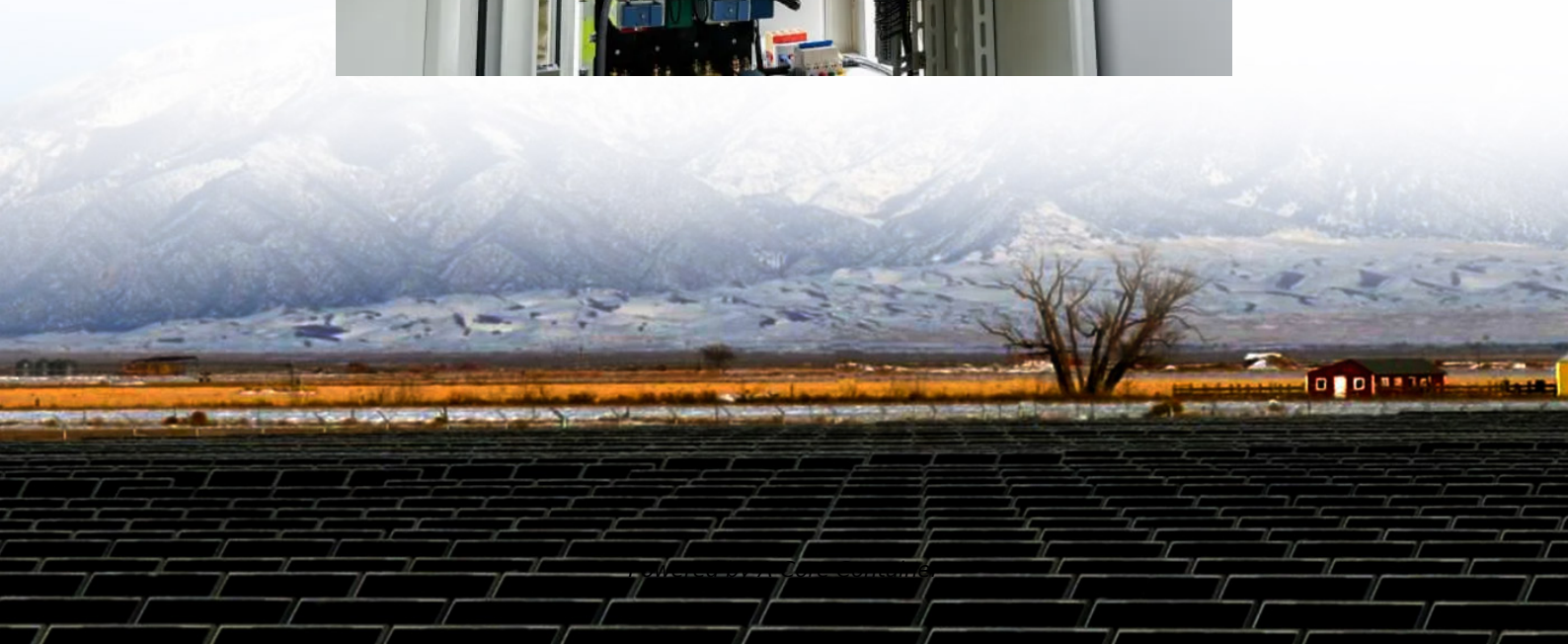


A-Core Container

Can the home solar integrated device be used indoors



Overview

Yes, they can work indoors, although not as efficiently as outdoors. Solar panels are made for outdoor use, but they can work if set up near a window. They can also work under indoor lights, but that's not efficient at all - or useful.

Yes, they can work indoors, although not as efficiently as outdoors. Solar panels are made for outdoor use, but they can work if set up near a window. They can also work under indoor lights, but that's not efficient at all - or useful.

Yes, they can work indoors, although not as efficiently as outdoors. Solar panels are made for outdoor use, but they can work if set up near a window. They can also work under indoor lights, but that's not efficient at all - or useful. However, some sources of indoor lighting have a similar.

Before discussing indoor use, it's essential to understand how solar power kits operate. A typical solar power kit consists of solar panels, a charge controller, a battery, and an inverter. The solar panels are the heart of the system, as they convert sunlight into direct current (DC) electricity.

With some smart planning, solar lights can also be used indoors. In fact, many homeowners and renters now use indoor solar lighting for backup, ambiance, and energy savings. If you're wondering how to make it work inside your home, this guide will help you understand what's possible, what to.

Do solar panels really work indoors?

Yes, solar panels definitely work indoors, either set up in the window, or powered by an incandescent or electric bulb - though don't expect much in terms of efficiency. Even if solar panels and chargers work less efficiently indoors, we shouldn't ignore this.

The off-grid power capabilities of solar generators allow them to be used in several different environments to power appliances and electronics. Solar generators can be used indoors. They don't produce emissions as they are

solely battery powered. It is recommended to use a solar generator in a.

Solar panels, or Photovoltaics (PV), work via the photoelectric effect, which converts light into electricity. This effect still happens indoors under artificial light sources, but on a much smaller scale since the absolute light intensity is up to a thousand times less. With so little power, what.

Can the home solar integrated device be used indoors

Contact Us

For catalog requests, pricing, or partnerships, please visit:
<https://a-core.pl>