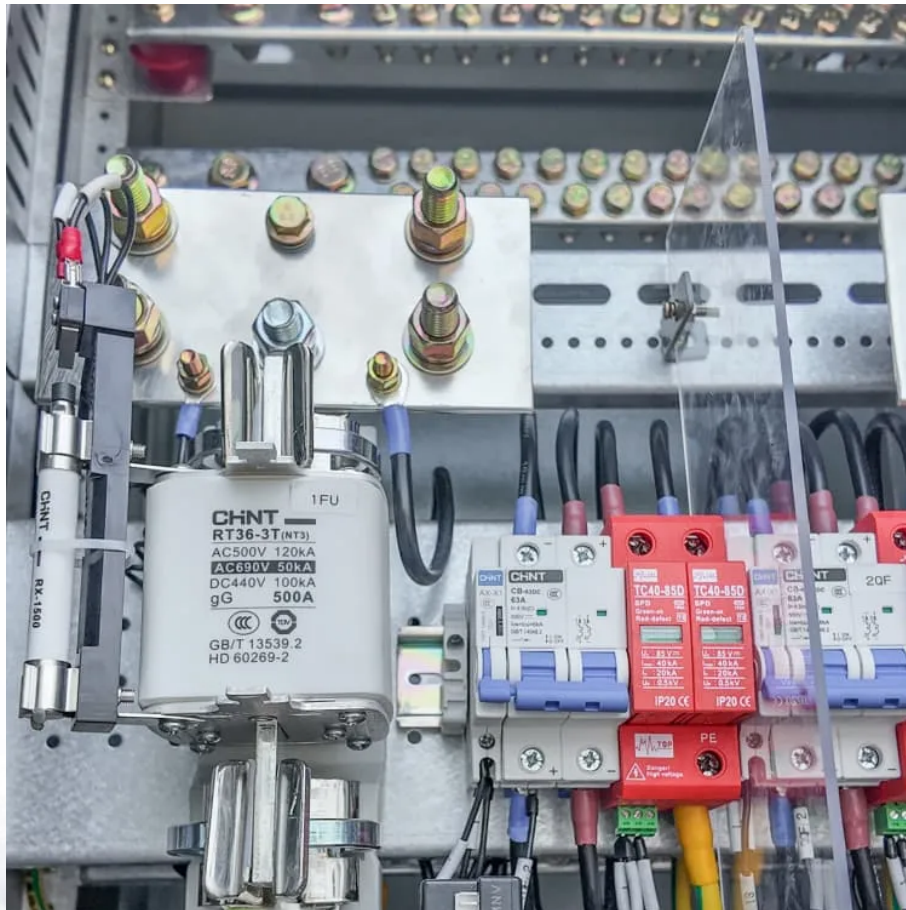


## A-Core Container

# Communication Base Station Flow Battery Technology and Management



## Overview

---

Why do telecom base stations need a battery management system?

As the backbone of modern communications, telecom base stations demand a highly reliable and efficient power backup system. The application of Battery Management Systems in telecom backup batteries is a game-changing innovation that enhances safety, extends battery lifespan, improves operational efficiency, and ensures regulatory compliance.

How does a telecom base station work?

Telecom base stations—integral nodes in wireless networks—rely heavily on uninterrupted power to maintain connectivity. To ensure continuous operation during power outages or grid fluctuations, telecom operators deploy robust backup battery systems.

Why do telecom base stations need backup batteries?

Backup batteries ensure that telecom base stations remain operational even during extended power outages. With increasing demand for reliable data connectivity and the critical nature of emergency communications, maintaining battery health is essential.

Why should telecom operators invest in battery management technology?

By investing in state-of-the-art battery management technologies, telecom operators are not only protecting their assets but also paving the way for a future where robust, reliable, and efficient power backup systems ensure that communication networks remain operational no matter what challenges arise.

What is a battery management system (BMS)?

A BMS equalizes the charge among cells, enhancing overall performance and longevity. Protection: The system prevents overcharging, deep discharging, overheating, and short circuits. By triggering alarms or disconnecting problematic cells, a BMS minimizes the risk of battery failure and hazardous

incidents.

Why is a battery management system important?

In a telecom environment, operational efficiency is key to sustaining high uptime and performance. A BMS contributes to this by: Providing Real-Time Data: Operators gain immediate insights into battery performance, allowing for informed decision-making and rapid response to issues.

## Communication Base Station Flow Battery Technology and Manager

---

### Contact Us

---

For catalog requests, pricing, or partnerships, please visit:  
<https://a-core.pl>