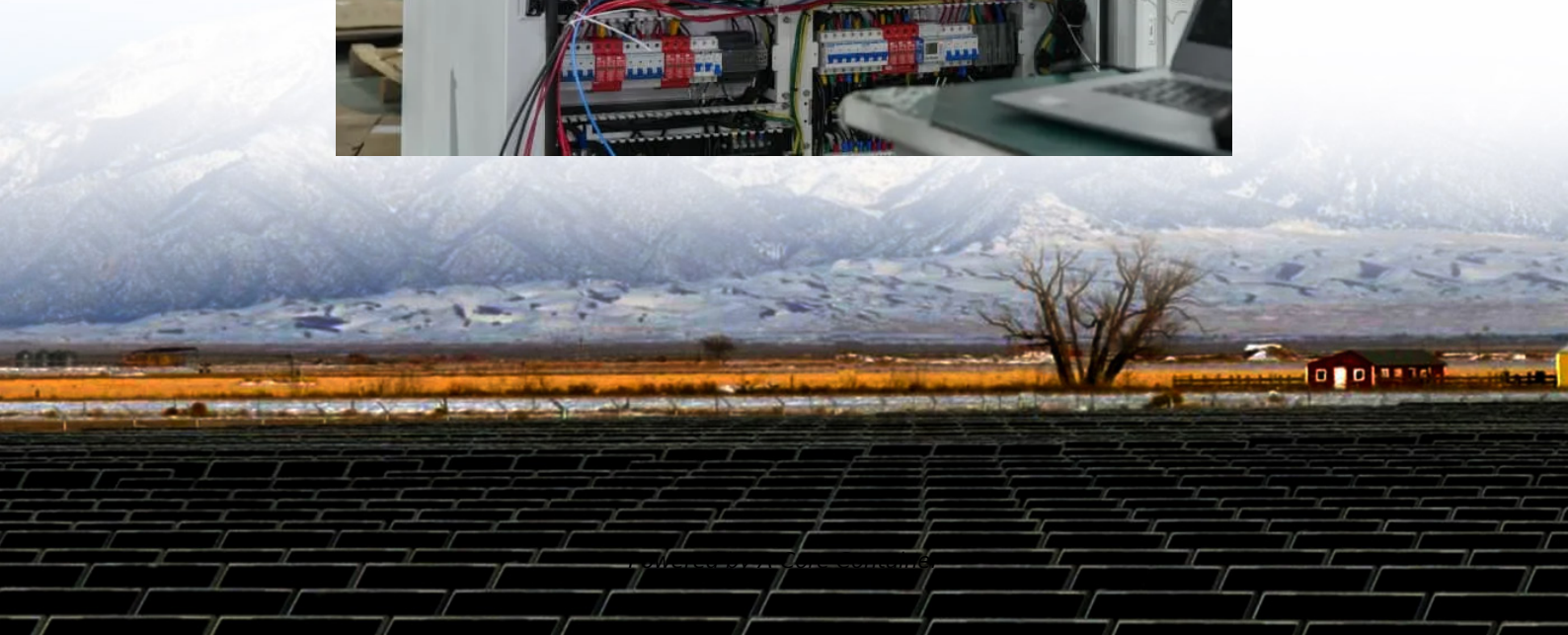
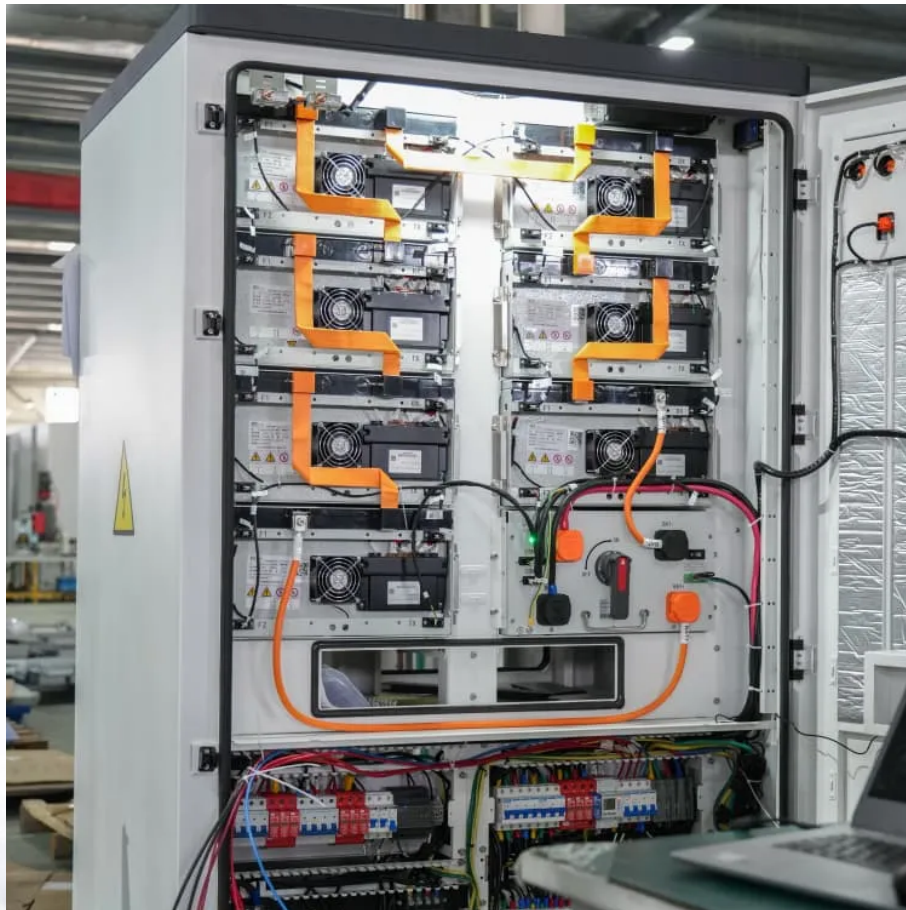


A-Core Container

Communication base station power generation and signal acquisition equipment



Overview

What is a base station power system?

The base station power system serves as a continuous "blood supply pump station," responsible for AC/DC conversion, filtering, voltage stabilization, and backup power. Its purpose is to ensure the uninterrupted operation of base station equipment.

What is a communication base station?

In the vast telecommunications network, communication base stations play a frontline role. Positioned closest to end users, they serve as gateways for processing customer requests and managing data flow. In the words of "Interesting Communication Engineering Drawings," these stations act like "business trackers," always vigilant to:

What is a base station connection diagram?

The connection diagram provides a clear overview of how the main base station equipment operates within the network. Surrounding this central "brain" are the "Four Guardians" that ensure seamless functionality: Power Supply: Provides a steady and uninterrupted energy source to keep the equipment operational.

What does a base station do?

The base station, positioned between users and data centers, is the first responder to user requests. It relays signals efficiently, ensuring users stay connected. This image highlights the compact but comprehensive nature of base stations, showcasing their integration of protective enclosures, power systems, and antennas. 3.

What are the benefits of a base station?

Base stations, while small in structure, are equipped with everything necessary to operate independently. They ensure: Protection against

environmental factors like wind, rain, and lightning. Uninterrupted power supply through robust systems and backup solutions. Efficient signal transmission to connect users to the broader network.

What are base station types?

Base station types. first the AC/DC or isolated PoE converter generating the intermediate bus voltage of 12 V or 5 V, and then a point-of-load converter to step down once more to the necessary voltage level. If the PoE architecture includes power-sourcing equipment (PSE), a 48-V power rail has to be stepped down to power the PSE controller.

Communication base station power generation and signal acquisition

Contact Us

For catalog requests, pricing, or partnerships, please visit:
<https://a-core.pl>