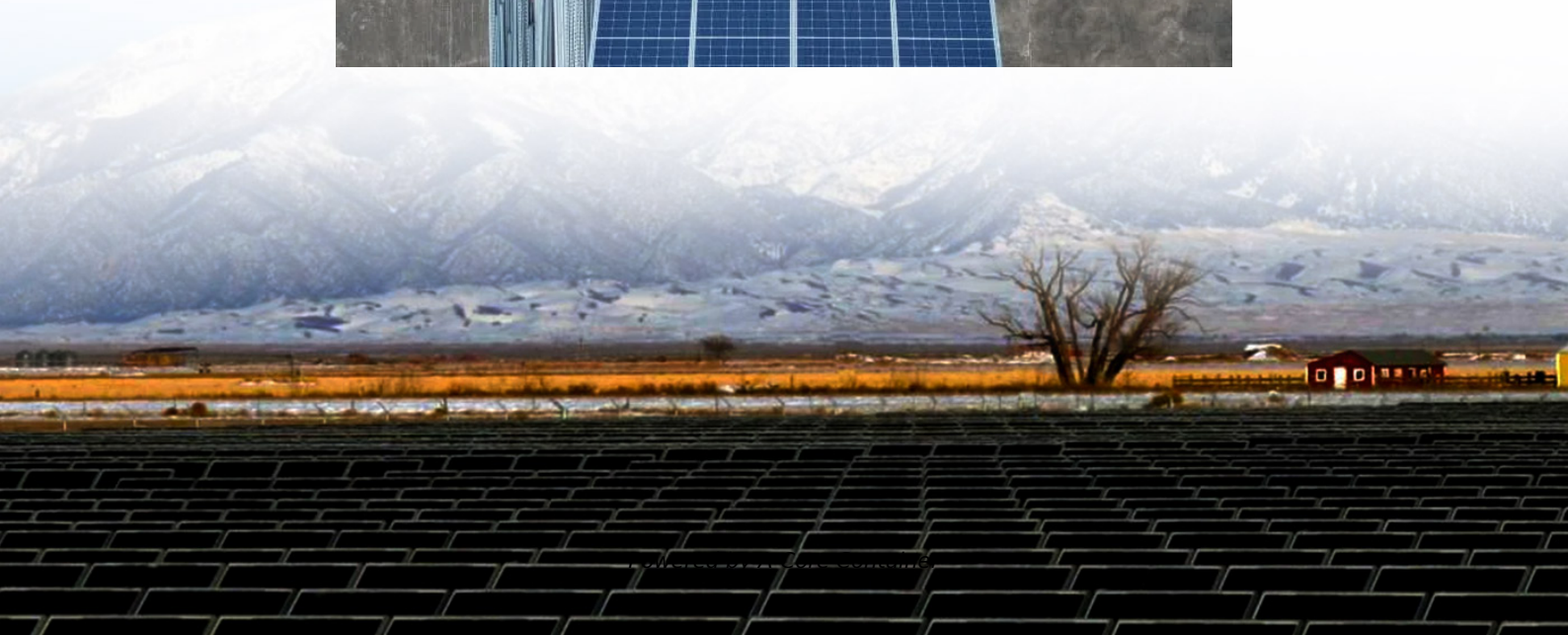
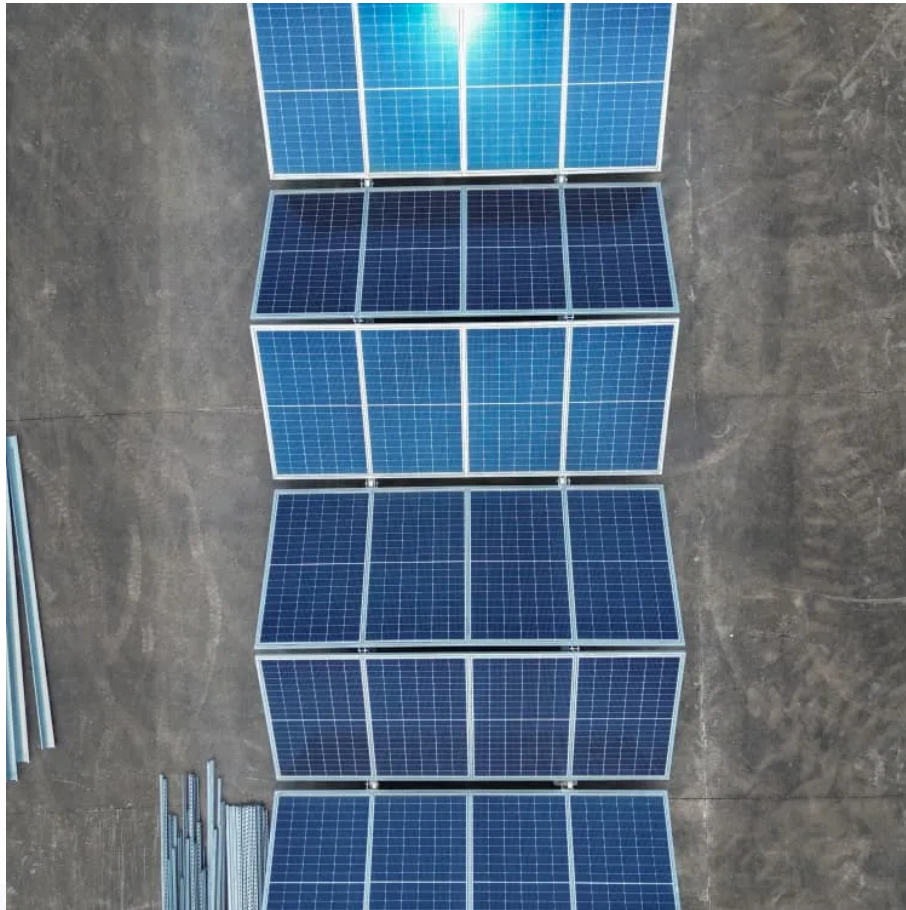


A-Core Container

Containerized energy storage battery structure design



Overview

What is a containerized energy storage battery system?

The containerized energy storage battery system comprises a container and air conditioning units. Within the container, there are two battery compartments and one control cabinet. Each battery compartment contains 2 clusters of battery racks, with each cluster consisting of 3 rows of battery racks.

What are the challenges in designing a battery energy storage system container?

The key challenges in designing the battery energy storage system container included: Weight Reduction: The container design had to be lightweight yet strong enough to withstand operational stresses like shocks and seismic forces, ensuring the batteries were protected during transport and deployment.

What is the optimal design method of lithium-ion batteries for container storage?

(5) The optimized battery pack structure is obtained, where the maximum cell surface temperature is 297.51 K, and the maximum surface temperature of the DC-DC converter is 339.93 K. The above results provide an approach to exploring the optimal design method of lithium-ion batteries for the container storage system with better thermal performance.

What is a containerized storage battery compartment?

The containerized storage battery compartment is separated by a bulkhead to form two small battery compartments with a completely symmetrical arrangement. The air-cooling principle inside the two battery compartments is exactly the same.

How to optimize battery storage system performance and safety?

To ensure optimal performance and safety of battery storage system, effective thermal management was a key consideration in the design. We integrated an efficient HVAC system into the container design by: Incorporating two AC chillers to cool the battery area, regulating the temperature inside the container.

What are the characteristics of a battery storage system?

The internal resistance remains unchanged during battery discharge [38, 39]; (3) The walls of the container do not transfer energy and matter to the outside world, and are considered adiabatic and non-slip wall; (4) The source of cooling air is stable and continuous, and the energy storage system operates under stable conditions.

Containerized energy storage battery structure design

Contact Us

For catalog requests, pricing, or partnerships, please visit:
<https://a-core.pl>