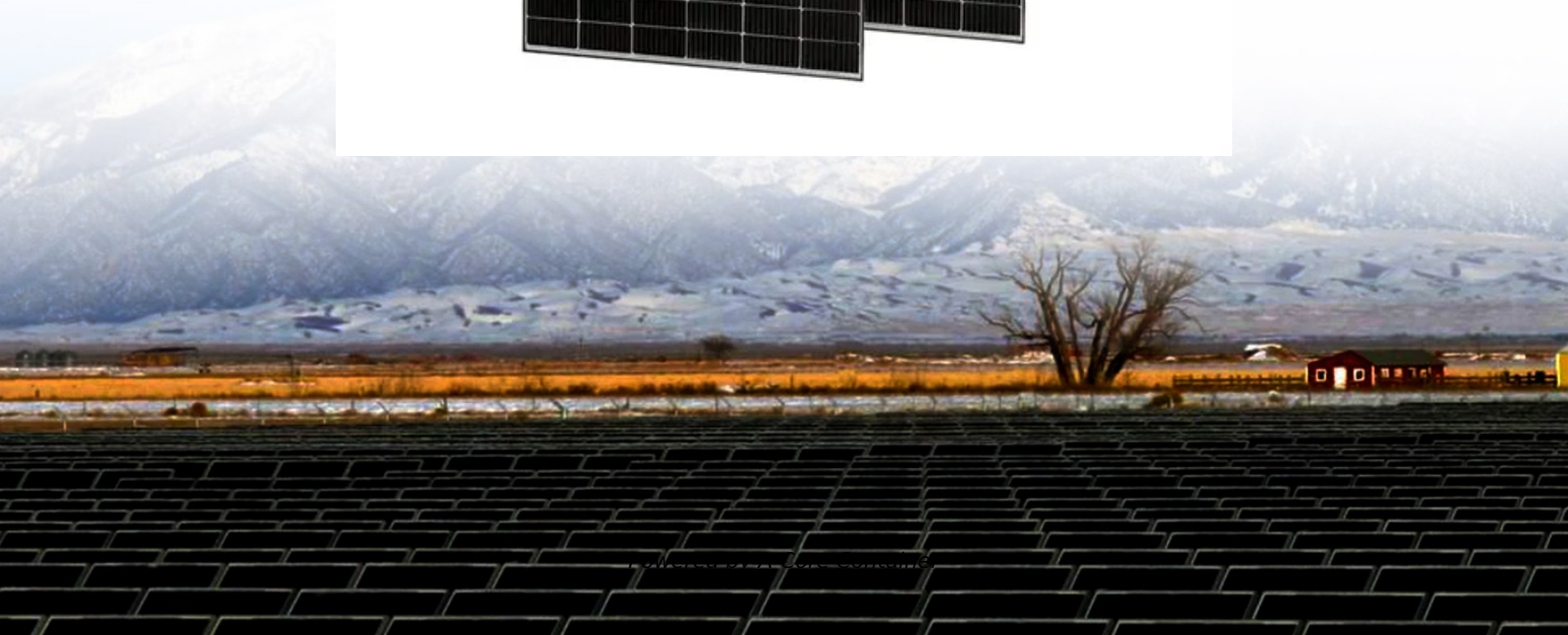
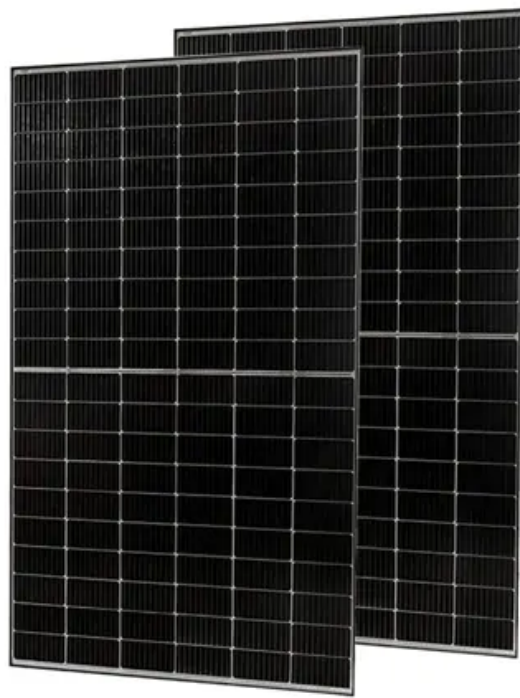


## A-Core Container

**Does Niue have any wind power stations or communication base stations**



## Overview

---

This is a list of power stations in New Zealand. The list is not exhaustive – only power stations over 0.5 MW and significant power stations below 0.5 MW are listed. Power plants in New Zealand have different generating roles – for baseload, intermediate or peaking. generators are those that run continuously (.

With the upcoming reintegration of the BESS and solar farms by December, Niue is poised to move closer to its goal of 80% renewable energy production by the end of 2025. The Ministry now has both old and new power stations available to ensure consistent energy delivery to all communities.

With the upcoming reintegration of the BESS and solar farms by December, Niue is poised to move closer to its goal of 80% renewable energy production by the end of 2025. The Ministry now has both old and new power stations available to ensure consistent energy delivery to all communities.

The journey began in 2020 through the support of the Australian Department of Foreign Affairs and Trade (DFAT) and the New Zealand Government. The new power station was made possible with the support by DFAT's \$2 million funding for the purchase, installation, system integration, and commissioning.

This is a list of power stations in New Zealand. The list is not exhaustive – only power stations over 0.5 MW and significant power stations below 0.5 MW are listed. Power plants in New Zealand have different generating roles – for baseload, intermediate or peaking. Baseload generators are those.

Application field Power supply for islands, villages, monitoring facilities, street lamps, automatic weather stations, communication base stations and border guard posts on expressways and To solve the problem of long-term stable and reliable power supply, we can only rely on local natural.

Just over a month ago, the Prime Minister of New Zealand, Rt Hon. Christopher Luxon announced a substantial investment of \$20.5 million into renewable energy initiatives in Niue. Today, the Deputy Prime Minister of New Zealand, Rt Hon. Winston Peters is here to break ground on what will become a.

maintain grid stability. Installing Vector PowerSmarts bespoke Energy

Management System (EMS) to manage Niue's electricity grid by balancing the new and existing by the end of 2025. The Ministry now has both old and new power stations available to ensure consistent energy production, biomass and.

Work is well underway for the new power station expected to commission next month. A team from Australia arrived on the island last week to commission the switchboards for the new power station. According to Director of the Department of Utilities Clinton Chapman, most of the switchboards have been. Will Niue generate 80% of its electricity by December 2025?

This project aims to enable Niue to generate 80% of its electricity from renewable energy by December 2025. This afternoon marked the groundbreaking ceremony for the Niue Renewable Energy Project Phase 2. This project aims to enable Niue to generate 80% of its electricity from renewable energy by December 2025.

When is Niue's New Power Station launching?

The Ministry of Infrastructure celebrated the successful launch of Niue's New Power Station on the 7th November 2024. The launch marks a critical milestone in Niue's journey to strengthen and modernize its energy infrastructure.

What does the Minister of infrastructure say about Niue's New Power Station?

The Minister of Infrastructure, Hon. Crossley Tatui extended his appreciation to the Australian and New Zealand Governments, saying, "The construction of this new power station is a vital piece of infrastructure for Niue's development and well-being. This achievement would not have been possible without the support of our regional partners."

Who congratulates Niue Power Corporation?

The Minister of Infrastructure, Hon. Crossley Tatui expressed deep gratitude for the efforts behind this project: "I must acknowledge the hard work and dedication of the staff of Niue Power Corporation, for keeping the lights on.

How did New Zealand support Niue's battery energy storage system?

In addition to Australia's support, the New Zealand Government contributed \$2.5 million to relocate and restore Niue's Battery Energy Storage System (BESS). This funding has allowed the Ministry to repair the grid control system, procure necessary fuel tanks, and install cabling and connections.

When will Niue's energy project start?

The initial phase of clearing the surrounding land will be completed by the end of this year, setting the stage for physical construction to commence in early 2025. In 2015, Niue launched the Strategic Energy Roadmap, with the ambitious goal of reaching 80% renewable energy production by 2025.

## Does Niue have any wind power stations or communication base sta

---

## Contact Us

---

For catalog requests, pricing, or partnerships, please visit:  
<https://a-core.pl>