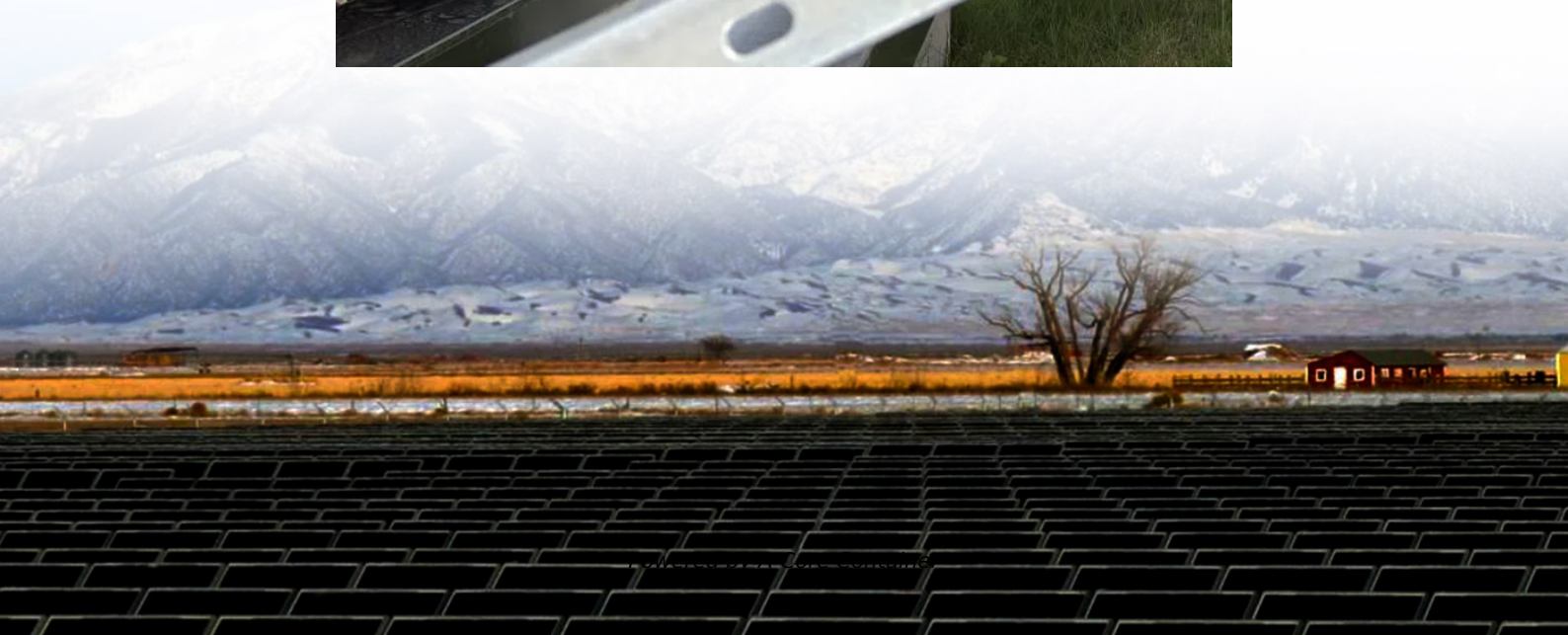
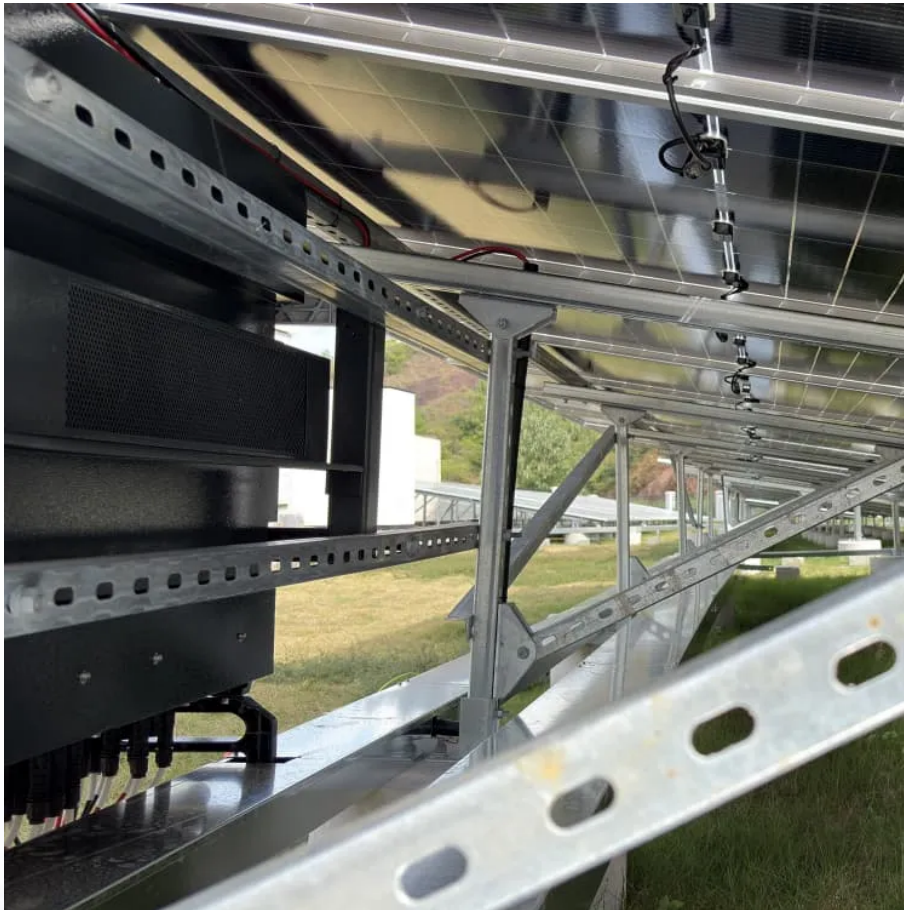


A-Core Container

Energy Storage Project Costs BESS Model Case



Overview

What is a battery energy storage system (BESS) model?

Tailored to the specific requirement of setting up a Battery Energy Storage System (BESS) plant in Texas, United States, the model highlights key cost drivers and forecasts profitability, considering market trends, inflation, and potential fluctuations in raw material prices.

What are base year costs for utility-scale battery energy storage systems?

Base year costs for utility-scale battery energy storage systems (BESSs) are based on a bottom-up cost model using the data and methodology for utility-scale BESS in (Ramasamy et al., 2023). The bottom-up BESS model accounts for major components, including the LIB pack, the inverter, and the balance of system (BOS) needed for the installation.

Are battery energy storage systems worth the cost?

Battery Energy Storage Systems (BESS) are becoming essential in the shift towards renewable energy, providing solutions for grid stability, energy management, and power quality. However, understanding the costs associated with BESS is critical for anyone considering this technology, whether for a home, business, or utility scale.

What is the financial model for the battery energy storage system?

Our financial model for the Battery Energy Storage System (BESS) plant was meticulously designed to meet the client's objectives. It provided a thorough analysis of production costs, including raw materials, manufacturing processes, capital expenditure, and operational expenses.

Why do we need a Bess battery optimisation system?

sumption, utilities and independent power producers can reduce the cost of energy they provide. There are several demand drivers for the expansion of BESS capacity, namely the sharp and continuing fall in costs of battery

storage technologies, making battery optimisation even more affordable, and the significant drop in lit.

How much does a Bess battery cost?

Factoring in these costs from the beginning ensures there are no unexpected expenses when the battery reaches the end of its useful life. To better understand BESS costs, it's useful to look at the cost per kilowatt-hour (kWh) stored. As of recent data, the average cost of a BESS is approximately \$400-\$600 per kWh. Here's a simple breakdown:

Energy Storage Project Costs BESS Model Case

Contact Us

For catalog requests, pricing, or partnerships, please visit:
<https://a-core.pl>