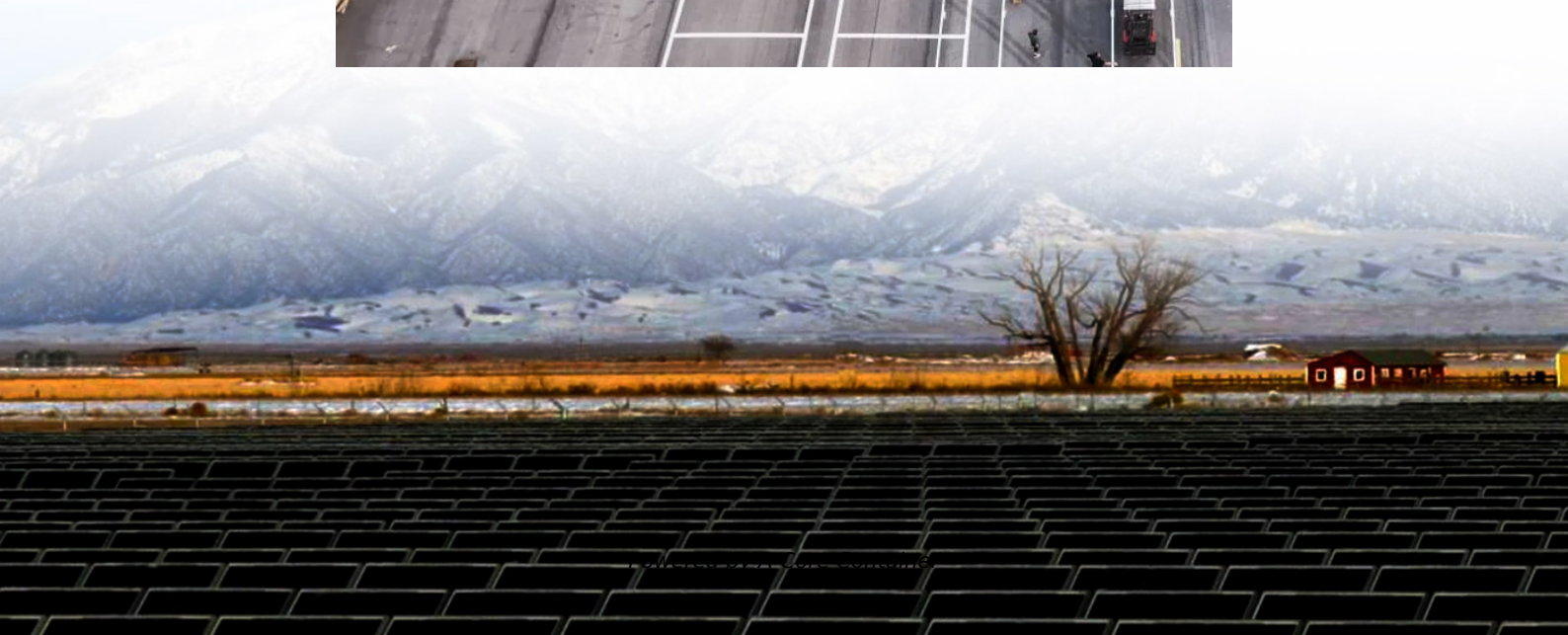
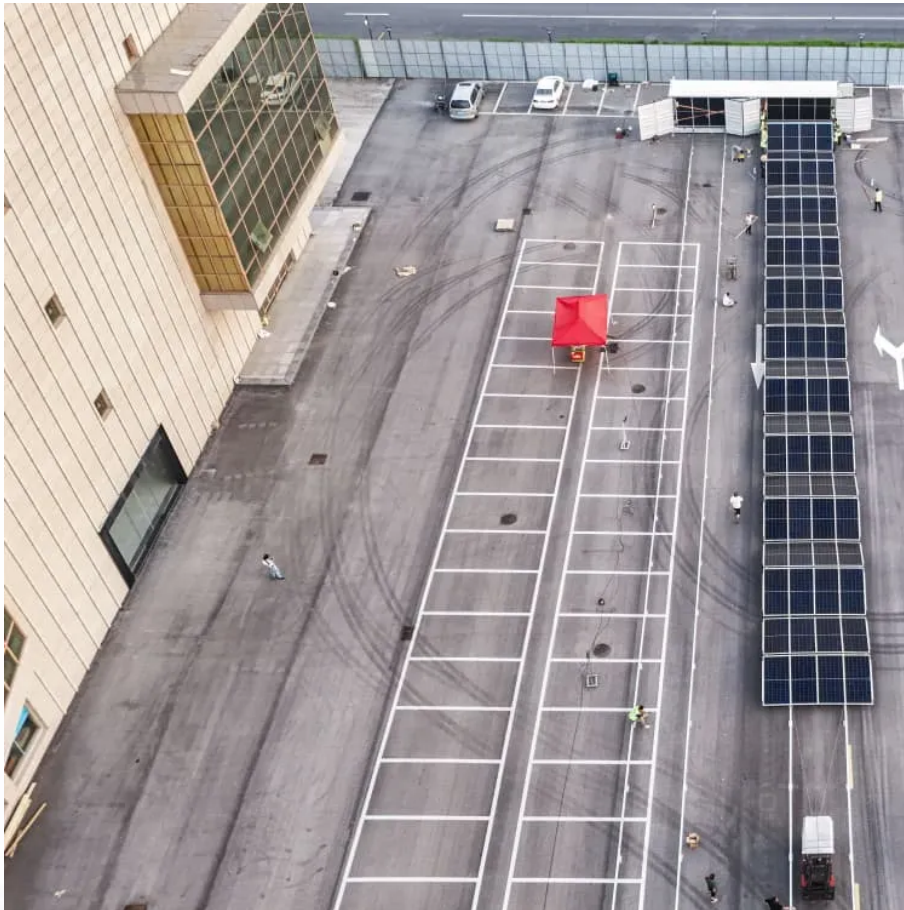


## A-Core Container

# Flywheel Energy Storage Intelligent Control



## Overview

---

Is flywheel energy storage system a competitive solution?

A comprehensive review of control strategies of flywheel energy storage system is presented. A case study of model predictive control of matrix converter-fed flywheel energy storage system is implemented. Flywheel energy storage system comes around as a promising and competitive solution. Potential future research work is suggested.

What is a flywheel energy storage system (fess)?

Abstract. Flywheel energy storage system (FESS) technologies play an important role in power quality improvement. The demand for FESS will increase as FESS can provide numerous benefits as an energy storage solution, including a long cycle life, high power density, high round-trip efficiency, and environment friendly.

How does a flywheel energy storage system work?

This flywheel energy storage system also requires motor speed control at the nominal speed level required by the generator to produce the optimal output voltage . A high-efficiency control system is required to ensure that the motor can drive the generator at the required speed.

Is a flywheel energy storage system based on a permanent magnet synchronous motor?

In this paper, a grid-connected operation structure of flywheel energy storage system (FESS) based on permanent magnet synchronous motor (PMSM) is designed, and the mathematical model of the system is established.

Why are flywheels a vital element in energy-generating systems?

Since flywheels are featured by the smooth transition between energy import and export according to the amount of demanded energy, they are deemed as a vital element in energy-generating systems . Currently, FESSs offer rapid

energy support in vast project scales, where economic feasibility is the dominant factor for their installation.

How does a flywheel work?

The electrical power is applied to the motor causing the flywheel spinning high speed, and this spinning mass has kinetic energy is converted back to electrical energy by driven the generator when electrical energy no more applied to the motor . Here, flywheel as a storage of mechanical energy react as a mechanical battery in the system.

## Flywheel Energy Storage Intelligent Control

---

### Contact Us

---

For catalog requests, pricing, or partnerships, please visit:  
<https://a-core.pl>