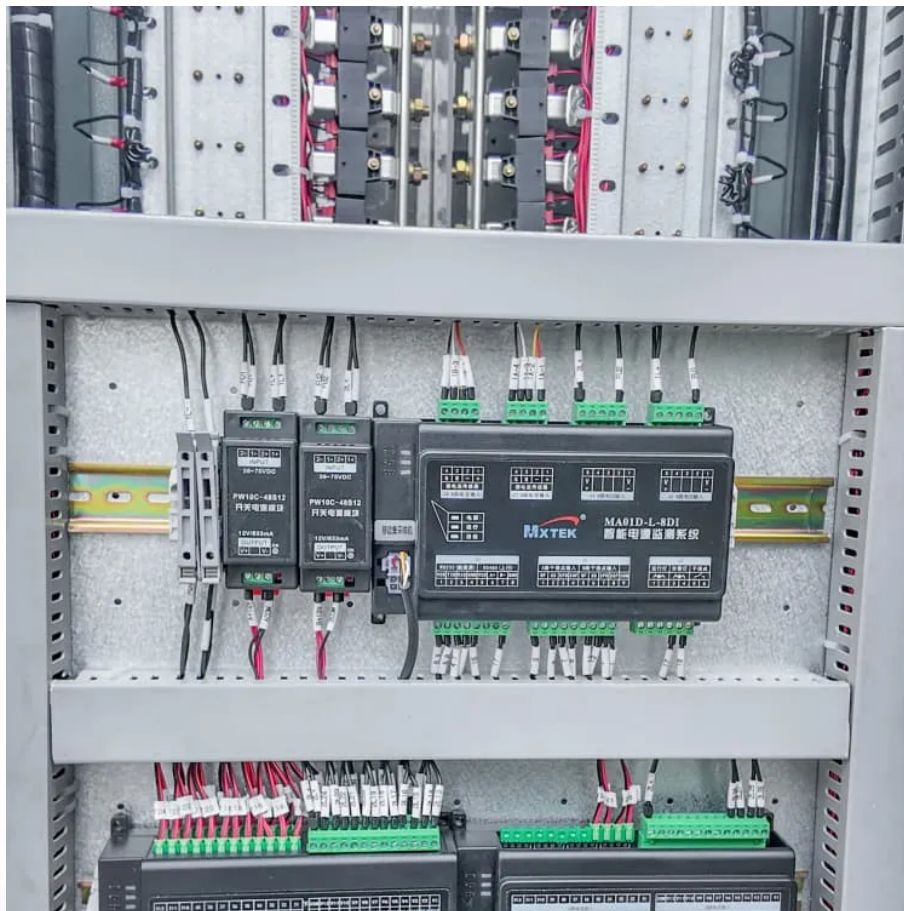


## A-Core Container

# Flywheel energy storage power generation latest



## Overview

---

A flywheel-storage power system uses a for , (see ) and can be a comparatively small storage facility with a peak power of up to 20 MW. It typically is used to stabilize to some degree power grids, to help them stay on the grid frequency, and to serve as a short-term compensation storage. Unlike common storage power plants, such as the

## Flywheel energy storage power generation latest

---

### Contact Us

---

For catalog requests, pricing, or partnerships, please visit:  
<https://a-core.pl>