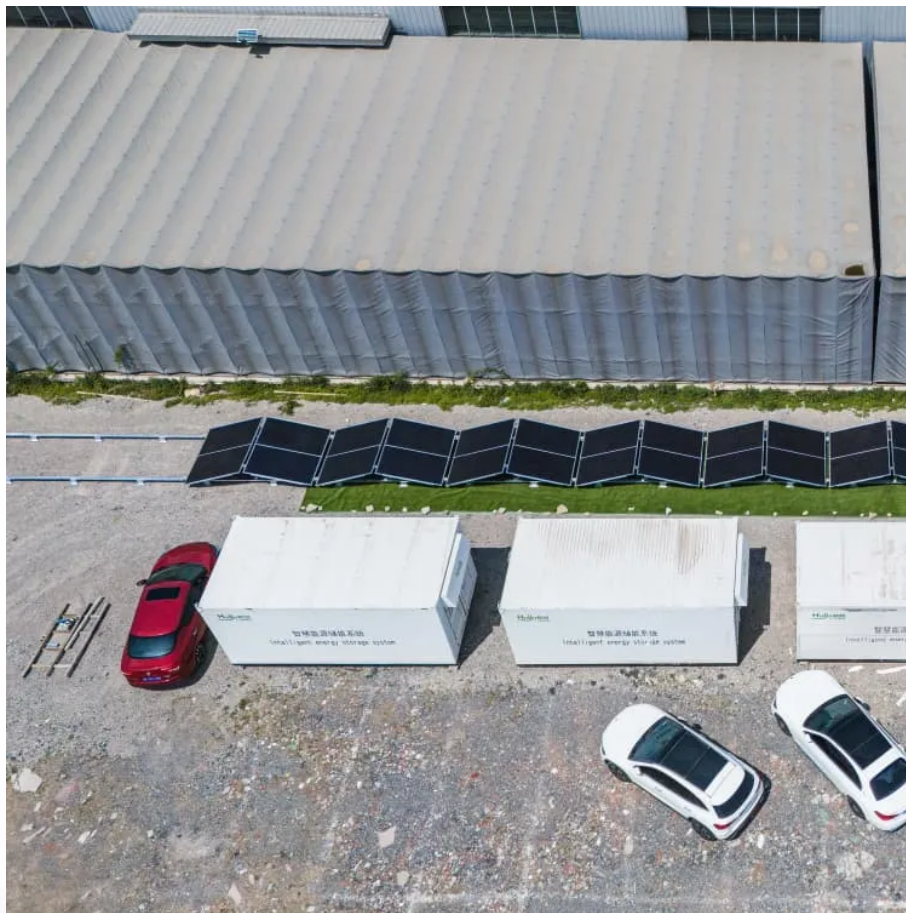


## A-Core Container

# German lithium battery energy storage project construction



## Overview

---

RWE breaks ground on Germany's largest battery storage project at the former Gundremmingen nuclear power plant in Bavaria, investing €230 million to deploy 850,000 lithium iron phosphate battery cells with 400MW power capacity and 700MWh storage capacity, scheduled.

RWE breaks ground on Germany's largest battery storage project at the former Gundremmingen nuclear power plant in Bavaria, investing €230 million to deploy 850,000 lithium iron phosphate battery cells with 400MW power capacity and 700MWh storage capacity, scheduled.

RWE is building Germany's largest battery storage facility to date at the Gundremmingen energy site. The 400-megawatt plant will have a storage capacity of 700 megawatt hours and will use the nuclear power plant's existing grid connection, which is currently being decommissioned. RWE is investing.

On October 29, 2025, German energy giant RWE held a groundbreaking ceremony for Germany's largest battery storage project at the Gundremmingen energy site in Bavaria. Bavaria's Minister President Markus Söder and RWE CEO Markus Krebber jointly attended this historic moment. Just four days earlier.

RWE has officially begun construction of Germany's largest battery storage facility at its Gundremmingen site in Bavaria. The facility will feature 400MW of power output and a storage capacity of 700 megawatt-hours, utilising the existing grid infrastructure from the now-decommissioned.

RWE has started construction of Germany's largest battery energy storage system (BESS) at the Gundremmingen energy site in Bavaria. The 400 MW plant will offer a storage capacity of 700 MWh and leverage the existing grid connection of the nuclear power plant, which is currently being decommissioned.

RWE held a symbolic groundbreaking ceremony on October 29, 2025, for what will become Germany's largest battery storage facility at the Gundremmingen

energy site in Bavaria. The 400-megawatt plant will feature a storage capacity of 700 megawatt-hours and represents an investment of approximately.

RWE has started building Germany's largest battery energy storage facility at its Gundremmingen site in Bavaria, marking a major step in the company's plan to repurpose former nuclear power sites for renewable energy use. The 400MW facility, with a total storage capacity of 700MWh, will use the.

## German lithium battery energy storage project construction

---

### Contact Us

---

For catalog requests, pricing, or partnerships, please visit:  
<https://a-core.pl>