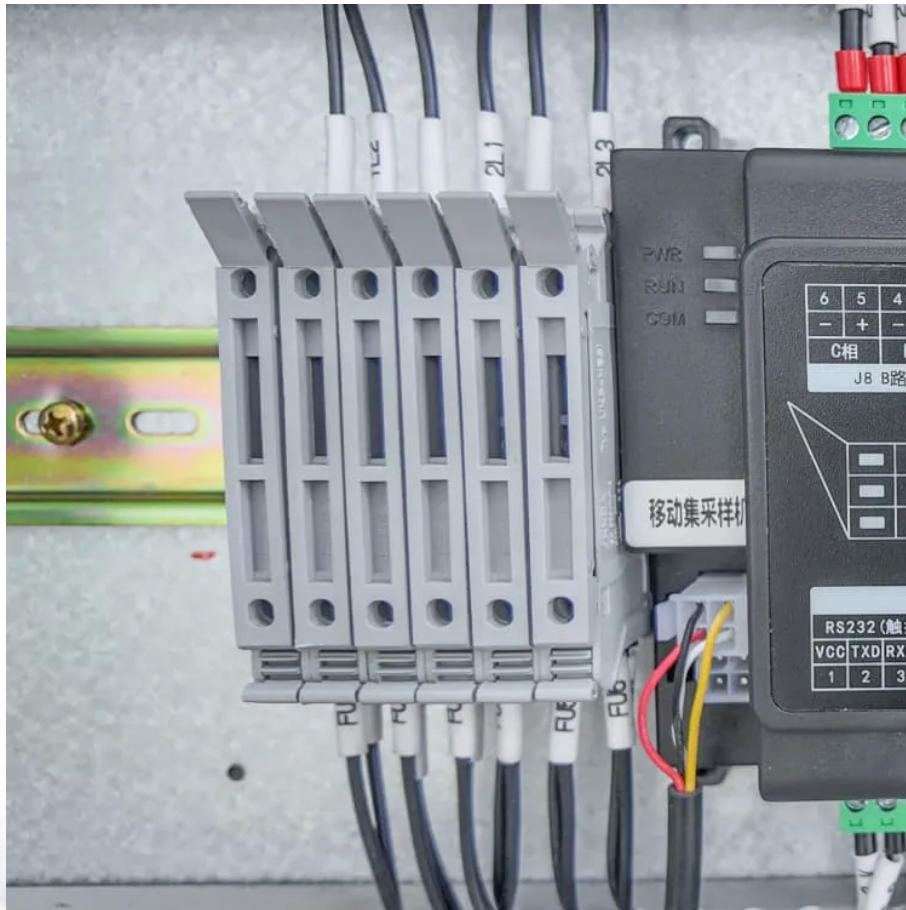


A-Core Container

Guinea 5G communication base station wind power hybrid power source



Overview

A massive increase in the amount of data traffic over mobile wireless communication has been observed in recent years, while further rapid growth is expected in the years ahead. The current fourth-

Will the 5G mobile communication infrastructure contribute to the smart grid?

In the future, it can be envisioned that the ubiquitously deployed base stations of the 5G wireless mobile communication infrastructure will actively participate in the context of the smart grid as a new type of power demand that can be supplied by the use of distributed renewable generation.

How will a 5G base station affect energy costs?

According to the mobile telephone network (MTN), which is a multinational mobile telecommunications company, report (Walker, 2020), the dense layer of small cell and more antennas requirements will cause energy costs to grow because of up to twice or more power consumption of a 5G base station than the power of a 4G base station.

What are the components of a 5G base station?

Baseband Unit (BBU): Handles baseband signal processing. Remote Radio Unit (RRU): Converts signals to radio frequencies for transmission. Active Antenna Unit (AAU): Integrates RRU and antenna for 5G-era efficiency. 2. Power Supply System This acts as the “blood supply” of the base station, ensuring uninterrupted power. It includes:.

What is the new perspective in sustainable 5G networks?

The new perspective in sustainable 5G networks may lie in determining a solution for the optimal assessment of renewable energy sources for SCBS, the development of a system that enables the efficient dispatch of surplus energy among SCBSs and the designing of efficient energy flow control algorithms.

How re technology is a viable solution for 5G mobile networks?

1. RE generation sources are a practical solution for 5G mobile networks. For SCNs, the RE technology is a viable and sustainable energy solution. RE technology can produce enough renewable energy to power SCBSs. It is predicted that 20% of carbon dioxide emissions will be reduced in the ICT industry by deploying RE techniques to SCNs.

What are the advantages of re in 5G mobile networks?

There are several potential advantages of RE in 5G mobile networks. First, for the network operator, RE can reduce the cost of energy consumption by deploying solar or wind energy base stations. RE enabled BSs can use solar energy for operation in the daytime, along with storing it in rechargeable batteries.

Guinea 5G communication base station wind power hybrid power so

Contact Us

For catalog requests, pricing, or partnerships, please visit:
<https://a-core.pl>