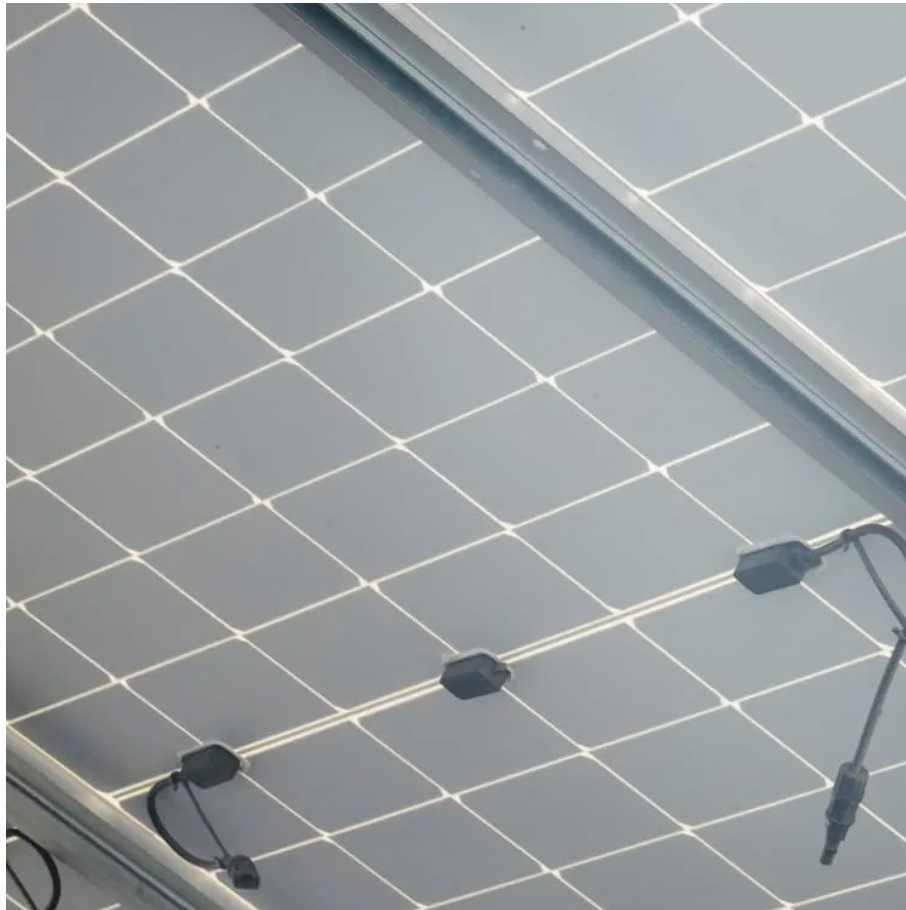


## A-Core Container

# Home peak-shaving energy storage system



## Overview

---

This detailed guide explores the mechanism, benefits, smart strategies, and practical considerations of leveraging a Home Battery Energy Storage System (BESS) to effectively manage and reduce high-cost energy usage during peak demand hours.

This detailed guide explores the mechanism, benefits, smart strategies, and practical considerations of leveraging a Home Battery Energy Storage System (BESS) to effectively manage and reduce high-cost energy usage during peak demand hours.

Whether you're managing a factory's fluctuating load or trying to optimize your home's solar setup, battery-based peak shaving offers a smart, scalable way to take control of your power bills and reduce grid stress. In this guide, we'll walk you through everything you need to know about peak.

Peak shaving is a technique used to reduce the peak demand for electricity during periods of high usage. Electricity providers often charge higher rates during peak hours, known as time-of-use (TOU) pricing. By storing excess energy during off-peak hours and discharging it during peak hours.

Peak shaving refers to reducing energy use during the grid's peak demand. Peak demand occurs in the morning and evening, straining the grid and risking outages when supply can't meet demand. HOW DOES PEAK SHAVING WORK?

Peak shaving works by energy consumers reducing their power usage from the.

For homeowners, one of the most immediate and tangible ways to participate in this shift is through the strategic implementation of a battery storage system for peak shaving. This detailed guide explores the mechanism, benefits, smart strategies, and practical considerations of leveraging a Home.

Before we explore how home battery storage systems support peak shaving, it's crucial to understand what peak shaving is. Peak shaving refers to the

practice of reducing electricity consumption during periods of high demand, known as peak hours. These peak hours typically occur during the day when.

Peak shaving refers to the process of reducing electricity consumption during times of peak demand. In simple terms, it means using less power from the grid when it's most expensive—usually during the busiest hours of the day. A peak shaving battery, or energy storage system (ESS), plays a key role.

## Home peak-shaving energy storage system

---

## Contact Us

---

For catalog requests, pricing, or partnerships, please visit:  
<https://a-core.pl>