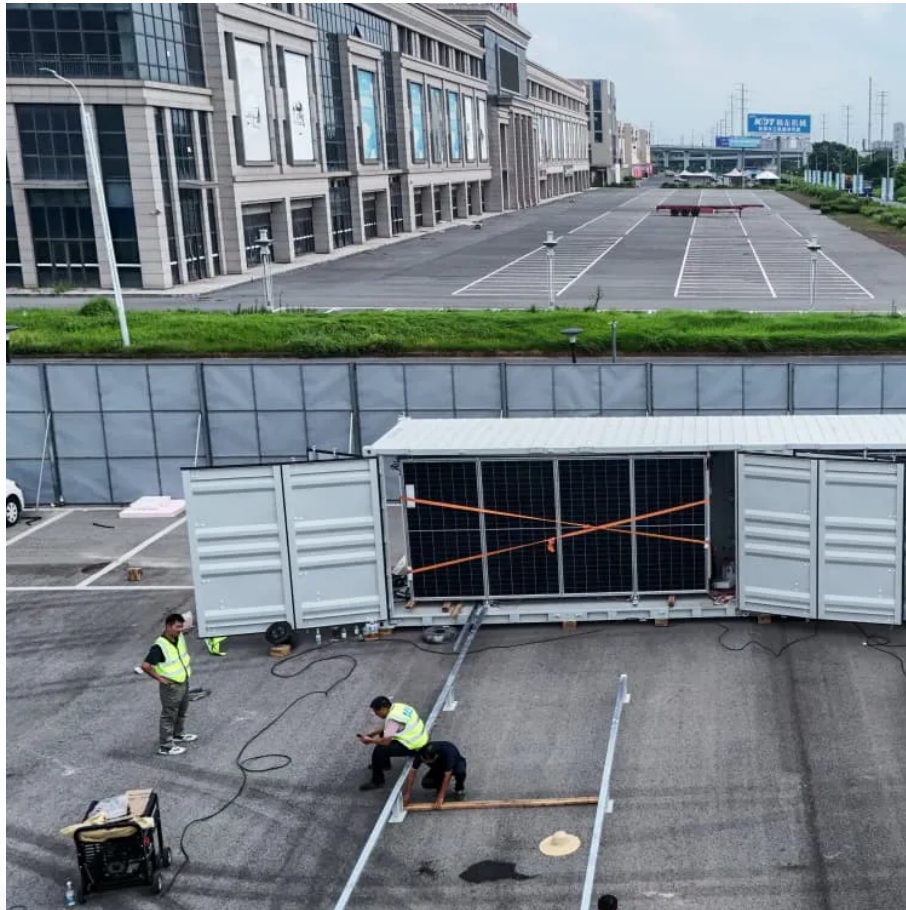


## A-Core Container

# How big an inverter should I use for a 8840kW solar system



## Overview

---

Generally, it's recommended to size the inverter to 80-100% of the DC system's rated capacity. Before determine the inverter size, the most important thing is to calculate your average daily power consumption (kWh) and calculate your solar panel array size to match your power.

Generally, it's recommended to size the inverter to 80-100% of the DC system's rated capacity. Before determine the inverter size, the most important thing is to calculate your average daily power consumption (kWh) and calculate your solar panel array size to match your power.

Choosing the right solar inverter size is critical—and one of the most common questions: what solar inverter size do I need?

Whether you are installing a rooftop system in California, powering a remote cabin in Alberta, or sizing for a community center in Rajasthan, getting it right means.

A solar inverter should closely match your solar system's output in kW—typically within 80% to 120% of your total panel capacity. Too big = wasted money. Too small = wasted energy What Is a Solar Inverter and Why Does Size Matter?

Swap out old appliances for energy-efficient ones to cut down your.

Choosing the right solar inverter size isn't just a technical detail—it's one of the most important steps in designing an efficient, cost-effective solar energy system. A perfectly sized solar inverter ensures you're maximizing the energy your panels produce, avoiding unnecessary losses, and.

Solar inverters convert the direct current (DC) electricity produced by solar panels to alternating current (AC) electricity, which is used to power home appliances and electronic devices. While there are several types of inverters including hybrid, grid-tie, and off-grid inverters they all perform.

Generally, it's recommended to size the inverter to 80-100% of the DC

system's rated capacity. Before determine the inverter size, the most important thing is to calculate your average daily power consumption (kWh) and calculate your solar panel array size to match your power consumption. You could.

General home users need to choose the capacity of the solar inverter combined with the demand for electricity and solar panel output, usually 1kW to 10kW to meet most of the scenarios, of which 2,000W is suitable for small family basic electricity, 3,000W is suitable for medium-sized families with.

## How big an inverter should I use for a 8840kW solar system

---

### Contact Us

---

For catalog requests, pricing, or partnerships, please visit:  
<https://a-core.pl>