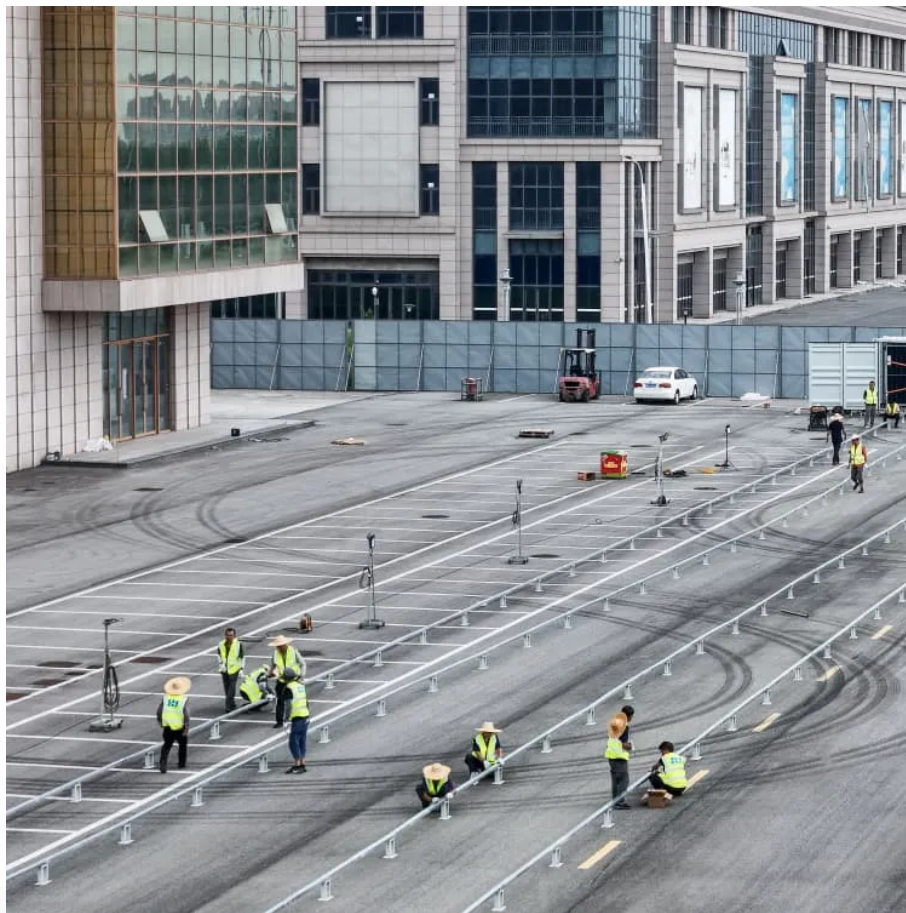


A-Core Container

How big of an inverter is needed for a 30kw solar system



Overview

The rule of thumb is to size your inverter 1.25 bigger than your solar array. In some cases, you may need to use multiple inverters to meet your power needs or increase your system's voltage. What size solar inverter do I Need?

Common sizes range between 1kW and upwards over 10kW. In order to accurately size your inverter, here is a very simple formula: $\text{Inverter Size} = \text{Total Solar Panel Output after losses or Desired battery output}$ if there is any.

What is a solar inverter sizing calculator?

A solar inverter sizing calculator is a tool used to determine the appropriate size of a solar inverter for your solar power system based on the total power consumption of connected appliances and the size of your solar panel array. It ensures the inverter can handle the peak loads efficiently.

Do I need an inverter size chart?

The need for an inverter size chart first became apparent when researching our DIY solar generator build. Solar generators range in size from small generators for short camping trips to large off-grid power systems for a boat or house. Consequently, inverter sizes vary greatly.

How many kW can a solar inverter generate?

Total capacity = $20 \times 500 = 10,000$ watts or 10 kW The industry standard suggests that the inverter's capacity should be between 80% to 125% of the solar panels' capacity. For example, if your panels generate 10 kW: Minimum inverter size = $10,000 \times 0.8 = 8$ kW Maximum inverter size = $10,000 \times 1.25 = 12.5$ kW.

What is inverter sizing?

Inverter sizing for solar installations is a three-fold process: analysis of one's needs and the matching of those needs with the outputs of solar panels,

considering growth in the future. As systems like the Growatt hybrid inverter become more popular, correct sizing becomes paramount to assure performance, reliability, and efficiency.

Do I need a single or multiple solar inverter?

For small systems (less than 5 kW), a single inverter is usually sufficient. For larger systems, multiple inverters or a string inverter with optimizers may be required. Using a solar inverter sizing chart can help determine whether a single or multiple inverters are needed based on your panel configuration and output.

How big of an inverter is needed for a 30kw solar system

Contact Us

For catalog requests, pricing, or partnerships, please visit:
<https://a-core.pl>