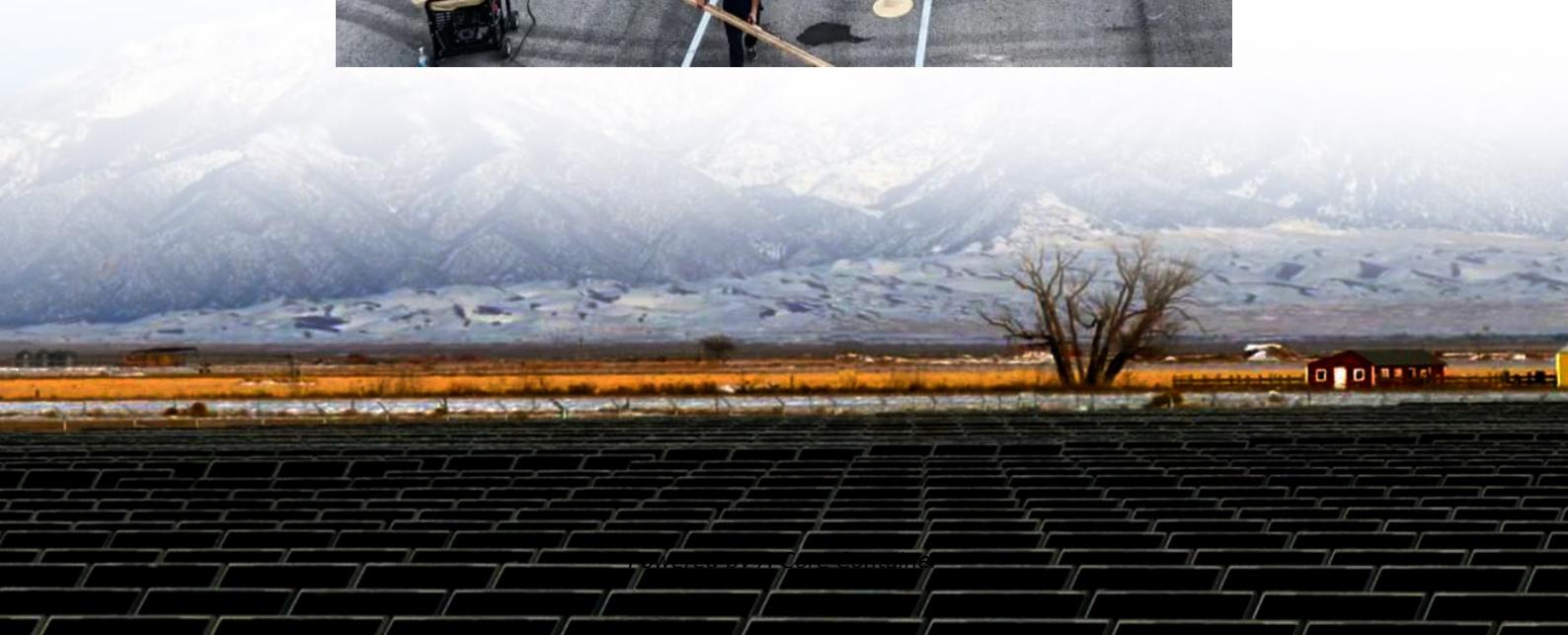
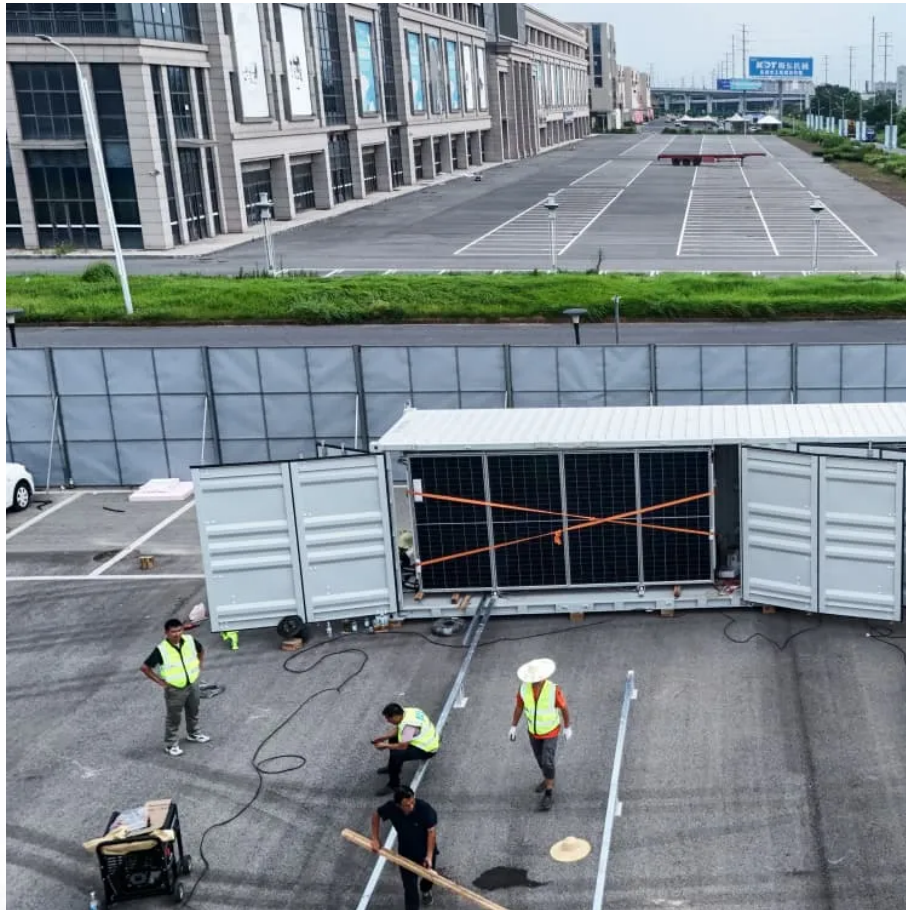


A-Core Container

How long does it take to charge 10 watts of solar power



Overview

To charge a 10W solar battery typically requires around 6 to 8 hours of direct sunlight, depending on various factors, including battery capacity, sunlight intensity, and solar panel efficiency. How long does it take to charge a solar panel?

Using the formula of solar panel charging time calculator, $100\text{Ah}/25\text{A} = 4\text{h}$, it suggests that it takes 4 hours to completely charge a 12-volt 100Ah battery. Similarly, with a 24V 100Ah battery, it would require 8 hours of solar panel operation to achieve a full charge. Also Read: [How Long Do Solar Lights Take to Charge?](#)

.

How do you calculate solar battery charge time?

The underlying formula for calculating solar battery charge time involves dividing the battery capacity by the solar panel's effective output (considering insolation and efficiency). Here's a breakdown: Formula: Charge Time (hours) = Battery Capacity (Ah) / (Solar Panel Wattage * Solar Insolation * Panel Efficiency).

How long to charge a 12V battery with 300W solar panels?

The duration to charge a 12V battery with 300W solar panels depends on the battery capacity and the solar panel current. For instance, at 6 peak hours and 25% system losses (efficiency is 75%), a single 300W solar panel can fully charge a 12V 50Ah battery in roughly 10 hours and 40 minutes. Let's understand it in detail.

How to charge a solar battery?

First of all, you need to start by converting the battery capacity of your solar battery from Ampere hours to Watt hours, ie: Watt-hours (Wh) = Amp-hours (Ah) x Voltage (V) Substituting the data gives you 960Wh for your solar battery. Then, you need to know how much you need to charge your solar

battery, i.e.:

How much power does a solar charge controller use?

Under normal circumstances, the power consumption rate of solar charge controllers is between 5% and 10%. 6. How to Calculate the Time Required to Charge a Solar Battery After getting the above data, you can calculate how long it will take to charge your solar battery.

How many watts can a solar panel produce?

The total amount of charge a battery can store, measured in amp-hours. For example, a 100Ah battery can deliver 1 amp for 100 hours. The maximum power output of a solar panel under standard test conditions, measured in watts. For instance, a 200W panel produces 200 watts of power per hour.

How long does it take to charge 10 watts of solar power

Contact Us

For catalog requests, pricing, or partnerships, please visit:
<https://a-core.pl>