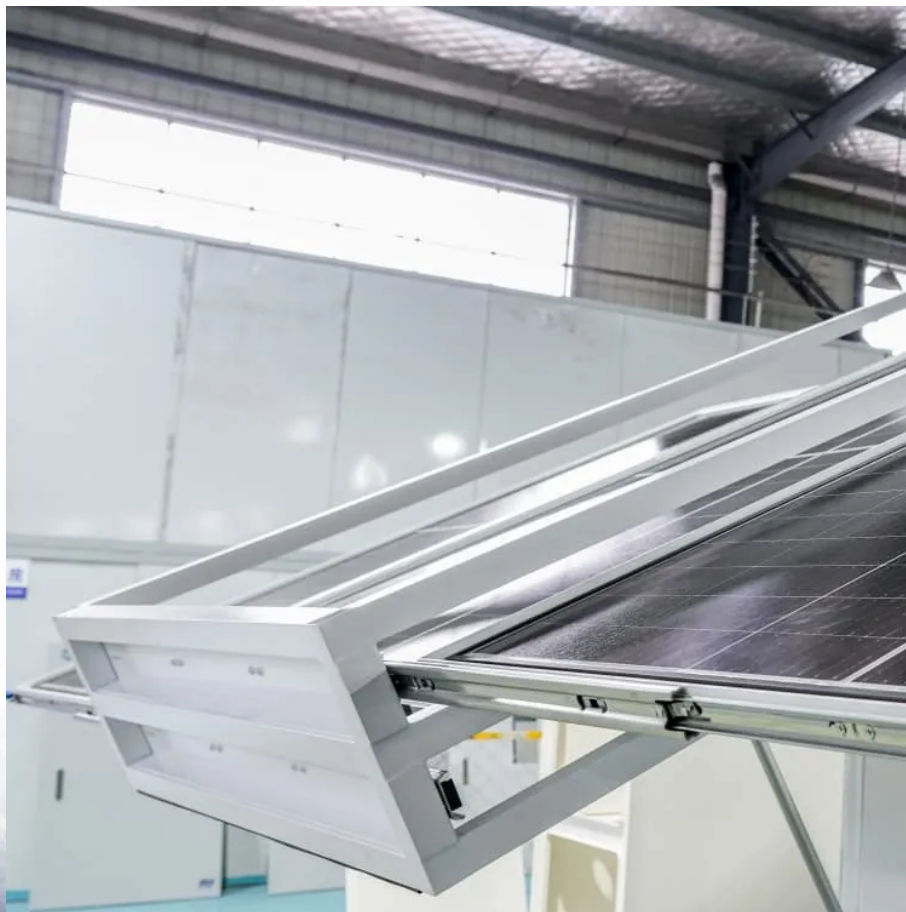


## **A-Core Container**

# **How long does it take to charge the Spanish lithium iron phosphate outdoor power cabinet**



## Overview

---

Lithium iron phosphate batteries can be charged in as fast as 1 hour. We recommend using a rate that charges our batteries in 2-5 hours. Please refer to the data sheet for your particular model, to find the recommended charge rates.

Lithium iron phosphate batteries can be charged in as fast as 1 hour. We recommend using a rate that charges our batteries in 2-5 hours. Please refer to the data sheet for your particular model, to find the recommended charge rates.

The charging duration of these batteries is a significant consideration for users, as it directly impacts usability and convenience. Let's delve into the factors that influence charging times for a 51.2V LFP battery. Understanding Charging Parameters To begin, it's essential to grasp the parameters.

Many users are unsure about the correct way to charge LiFePO<sub>4</sub> batteries 1, leading to reduced efficiency or even permanent damage. Improper charging can shorten battery lifespan, affect performance, and in some cases, lead to overheating or failure. Following the right two-stage charging process 2.

The most common charging method is a three-stage approach: the initial charge (constant current), the saturation topping charge (constant voltage), and the float charge. In Stage 1, as shown above, the current is limited to avoid damage to the battery. The rate of change in voltage continually.

How long will it take to charge a lithium battery?

Lithium iron phosphate batteries can be charged in as fast as 1 hour. We recommend using a rate that charges our batteries in 2-5 hours. Please refer to the data sheet for your particular model, to find the recommended charge rates. All of our data.

A Lithium Iron Phosphate (LiFePO<sub>4</sub>) battery is a type of rechargeable lithium-ion battery that utilizes lithium iron phosphate as its cathode material. Known for its stable chemical composition and safety features, this battery type is

widely used in various applications requiring reliable energy.

The most effective method for charging LiFePO<sub>4</sub> batteries is the Constant Current Constant Voltage (CCCV) technique. This method involves two stages:

Constant Current Charging: The charger delivers a specific current until the battery voltage reaches a predetermined level. Constant Voltage Charging:.

## How long does it take to charge the Spanish lithium iron phosphate

---

### Contact Us

---

For catalog requests, pricing, or partnerships, please visit:  
<https://a-core.pl>