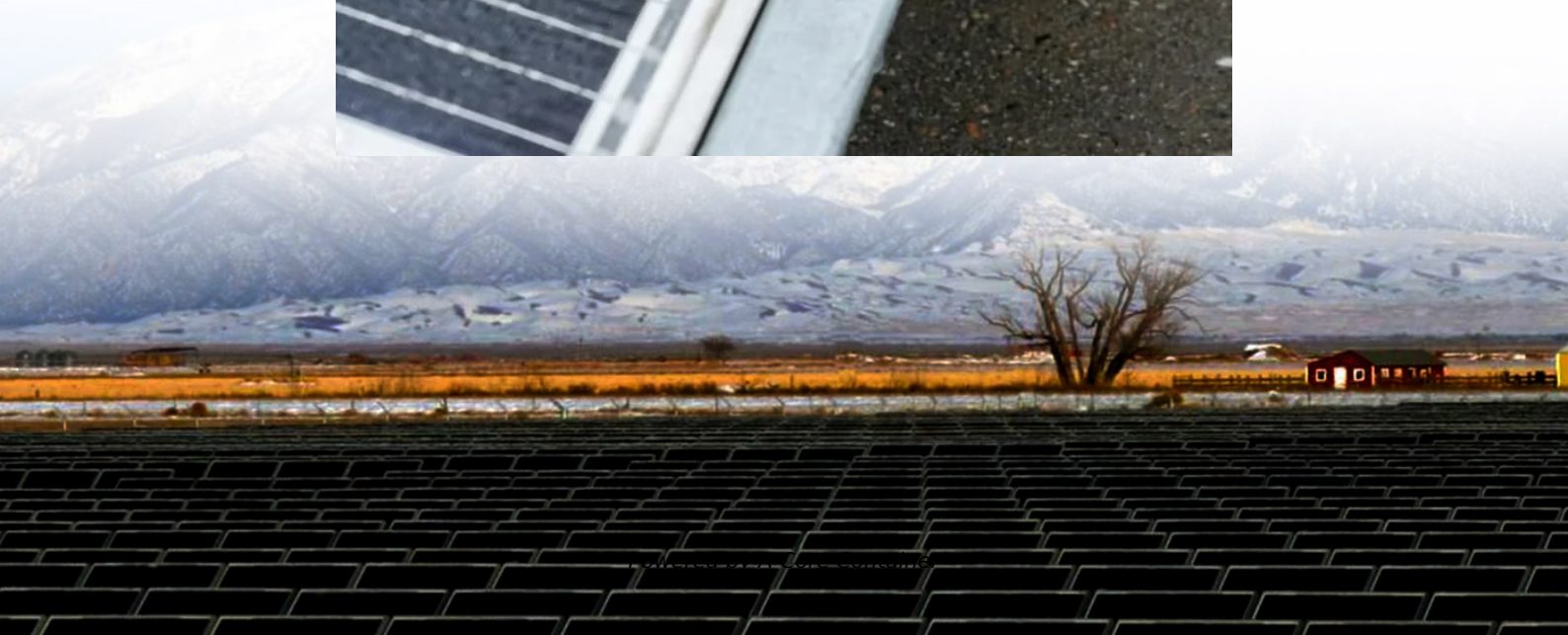
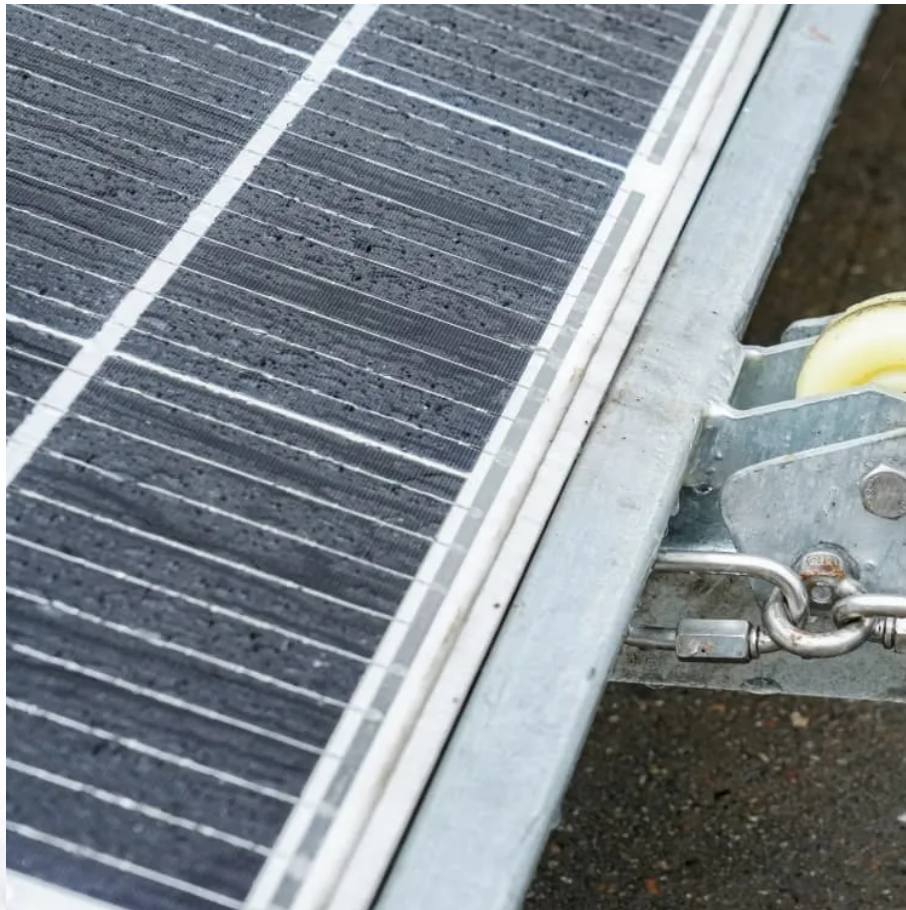


A-Core Container

**How many power stations must
be equipped with energy
storage**



Overview

To determine the appropriate amount of energy storage needed for new energy stations, several factors must be considered, including 1. demand prediction, 2. type of energy generated, 3. geographical considerations, 4. regulatory frameworks, and 5. integration with the.

To determine the appropriate amount of energy storage needed for new energy stations, several factors must be considered, including 1. demand prediction, 2. type of energy generated, 3. geographical considerations, 4. regulatory frameworks, and 5. integration with the.

How much energy storage should be equipped with new energy stations?

To determine the appropriate amount of energy storage needed for new energy stations, several factors must be considered, including 1. demand prediction, 2. type of energy generated, 3. geographical considerations, 4. regulatory.

We expect 63 gigawatts (GW) of new utility-scale electric-generating capacity to be added to the U.S. power grid in 2025 in our latest Preliminary Monthly Electric Generator Inventory report. This amount represents an almost 30% increase from 2024 when 48.6 GW of capacity was installed, the largest.

Battery Energy Storage Systems, or BESS, help stabilize electrical grids by providing steady power flow despite fluctuations from inconsistent generation of renewable energy sources and other disruptions. While BESS technology is designed to bolster grid reliability, lithium battery fires at some.

Battery storage power stations store electrical energy in various types of batteries such as lithium-ion, lead-acid, and flow cell batteries. These facilities require efficient operation and management functions, including data collection capabilities, system control, and management capabilities.

Grid-scale storage refers to technologies connected to the power grid that can store energy and then supply it back to the grid at a more advantageous time – for example, at night, when no solar power is available, or during a weather

event that disrupts electricity generation. The most widely-used.

The AES Lawai Solar Project in Kauai, Hawaii has a 100 megawatt-hour battery energy storage system paired with a solar photovoltaic system. Sometimes two is better than one. Coupling solar energy and storage technologies is one such case. The reason: Solar energy is not always produced at the time.

How many power stations must be equipped with energy storage

Contact Us

For catalog requests, pricing, or partnerships, please visit:
<https://a-core.pl>