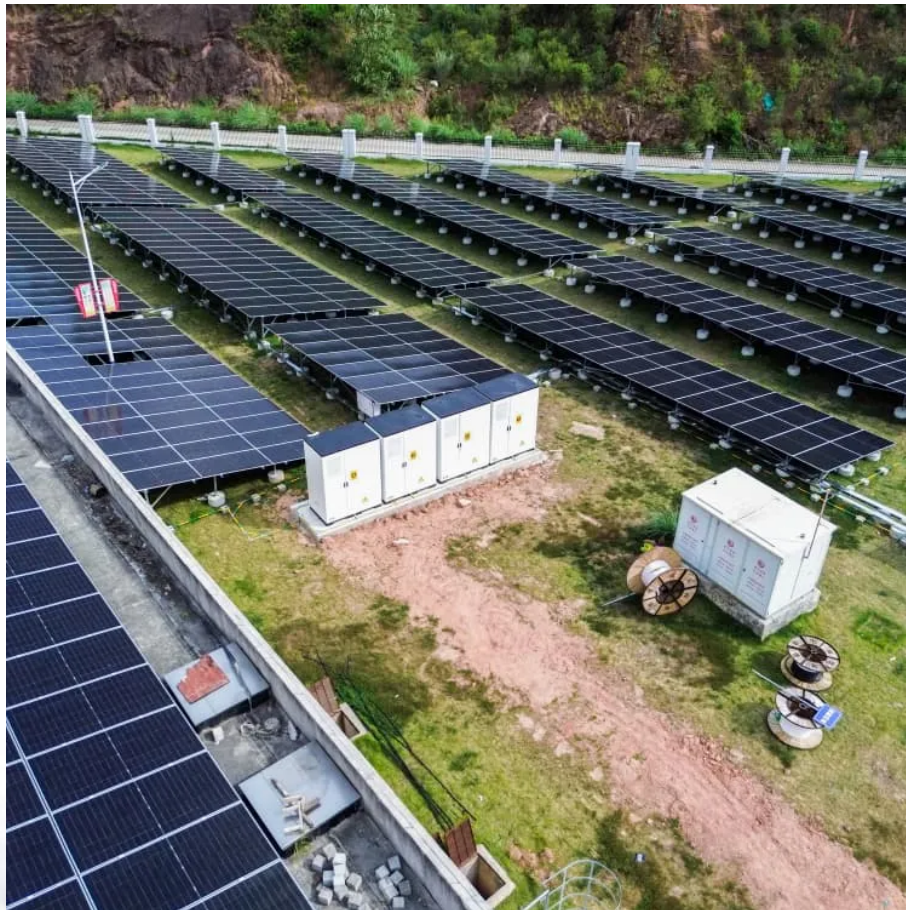


## A-Core Container

**How much is the grid-connected  
power of the communication  
base station inverter**



## Overview

---

As more solar systems are added to the grid, more inverters are being connected to the grid than ever before. Inverter-based generation can produce energy at any frequency and does not have the same inertial properties as steam-based generation, because there is no turbine involved.

As more solar systems are added to the grid, more inverters are being connected to the grid than ever before. Inverter-based generation can produce energy at any frequency and does not have the same inertial properties as steam-based generation, because there is no turbine involved.

Fundamentally, an inverter accomplishes the DC-to-AC conversion by switching the direction of a DC input back and forth very rapidly. As a result, a DC input becomes an AC output. In addition, filters and other electronics can be used to produce a voltage that varies as a clean, repeating sine wave.

How 5G base station microgrid power backup works?

The charging and discharging actions of energy storage meet the requirements of various 5G base stations for microgrid power backup. During the low electricity price period, the 5G base station microgrid purchases electricity from the grid to meet.

The article discusses the costs associated with building and maintaining a communication base station, categorizing them into initial setup costs such as site acquisition, design and Sep 17, 2024 · The total cost of a solar base station is directly influenced by its size, as larger systems require.

Use our Communication Base Station calculator to determine the power consumption, wattage, and running cost for 7.5 hours. Calculate how this 50-watt appliance impacts your electricity bill, energy usage, and overall cost per kilowatt-hour. Calculate the energy consumption and running costs of your.

What is the energy consumption of 5G communication base stations?

Overall, 5G communication base stations' energy consumption comprises static and dynamic power consumption . Among them, static power consumption pertains to the reduction in energy required in 5G communication base stations that.

How to estimate the cost of building and operating a cellular network?

A simple method for estimating the costs of building and operating a cellular mobile network is proposed. Using the empirical data from a third generation mobile system (WCDMA), it is shown that the cost is driven by different.

## How much is the grid-connected power of the communication base s

---

## Contact Us

---

For catalog requests, pricing, or partnerships, please visit:  
<https://a-core.pl>