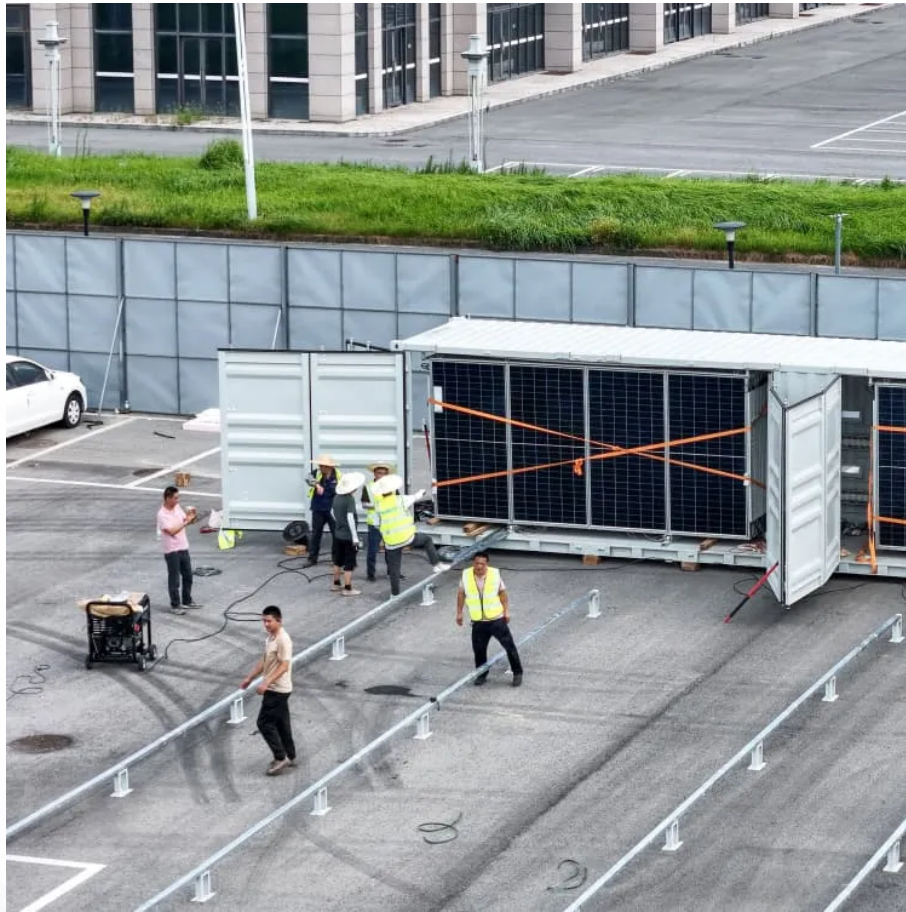


A-Core Container

How to choose outdoor power supply capacity



Overview

Power Capacity Determine your power needs according to the electrical appliances you plan to use outdoors. If you only need to charge small devices like mobile phones and cameras, a lower-capacity power supply may suffice.

Power Capacity Determine your power needs according to the electrical appliances you plan to use outdoors. If you only need to charge small devices like mobile phones and cameras, a lower-capacity power supply may suffice.

(Summary description) In 2025, choosing the right outdoor power supply is crucial for a range of activities, from camping trips to emergency power backup. Whether you need to charge your devices while off the grid or ensure a reliable power source during a power outage, selecting a power supply.

Pedoc, a US based manufacturer, specializes in designing and fabricating power pedestals that meet a wide range of outdoor power needs. With decades of experience in outdoor power distribution, our solutions provide: Reliable, safe, and customizable power distribution. cULus-certified, weatherproof.

Selecting the right outdoor power supply is crucial for ensuring that your outdoor activities or equipment function smoothly, whether it's for camping, remote work, outdoor events, or powering devices like solar streetlights, tools, or appliances. With various options available, it's important to.

A dependable outdoor power supply is essential, especially when traditional battery-powered devices are limited by their small capacity, short lifespan, and reliance on charging facilities. Fortunately, the latest advancements in power solutions, such as the saltwater-powered emergency battery.

How to select an energy storage device that meets one's own needs from among them has become a challenge for many users. Next, we will analyze the key points for choosing an outdoor power supply from multiple core dimensions in depth. When choosing an outdoor power supply, the required electricity.

How to choose an outdoor power supply?

Outdoor portable power stations are very popular now. 500W or 1000W outdoor power supplies, which is more suitable?

To be honest, the high-power ones are very cool to use, but the weight and volume have also increased. Unless you are driving out to play, it is.

How to choose outdoor power supply capacity

Contact Us

For catalog requests, pricing, or partnerships, please visit:
<https://a-core.pl>