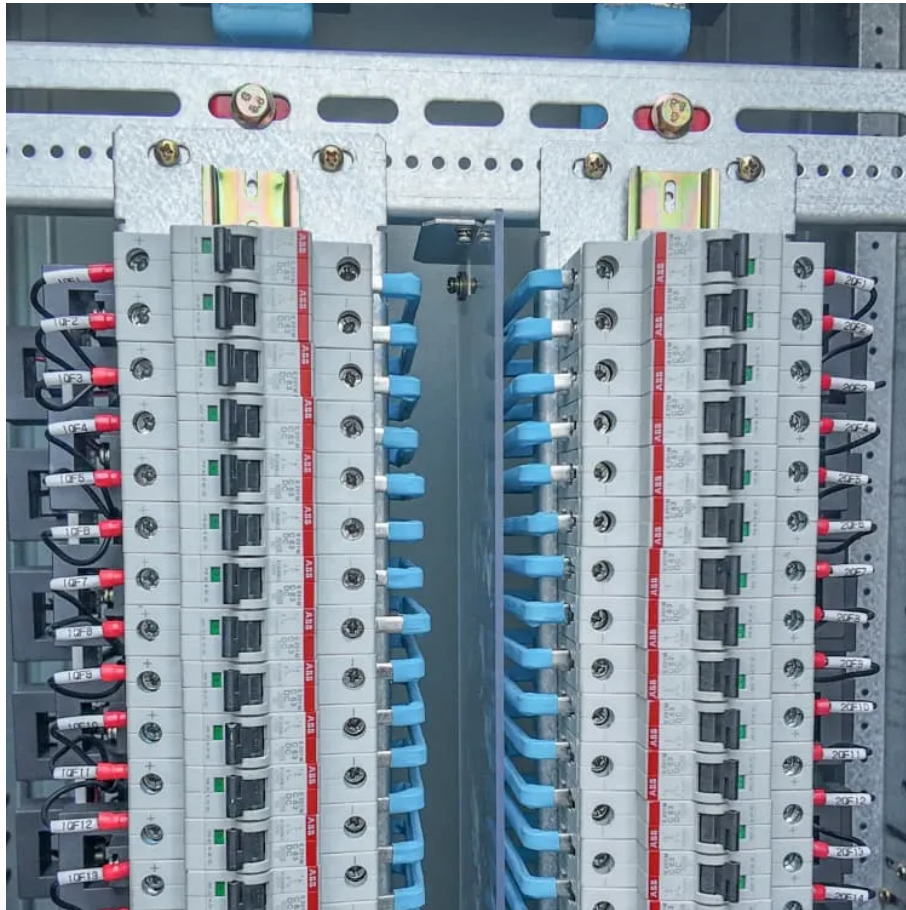


A-Core Container

How to configure a solar charging system



Overview

This blog introduces how to properly set up a basic solar system, covering how to plug in and wire solar panels, how to hook up solar panels and connect solar panels to battery, and how to do solar panel wiring diagram. How do I set up a solar charging system?

To set up a functional solar charging system, you need a few essential components: a solar panel to absorb energy from the sun and convert it into electricity; a charge controller to regulate the amount of electricity flowing into the battery to prevent overcharging or undercharging; and a battery to store the electricity.

How do I connect a solar panel to a charge controller?

Step 1: Hook up the battery to the charge controller. Connect the battery terminal wires to the charge controller FIRST, then connect the solar panel (s) to the charge controller. For detailed reasons, see [Should We Connect Batteries First Instead of Solar Panels to Charge Controllers?](#)

.

Can You charge a battery from solar panels?

If you've been looking for an eco-friendly and sustainable way to power your devices, then charging from solar panels may be the answer! With a solar panel system, you have access to an energy source that's virtually endless and renewable. In this blog post, we'll provide you with an in-depth guide on how to charge a battery from solar panels.

How do I choose a solar charge controller?

When it comes to choosing the right charge controller for your solar charging system, there are two main options: PWM and MPPT charge controllers. PWM (Pulse Width Modulation) controllers are generally less expensive and simpler to install, making them a good option for smaller systems.

What is a solar charge controller?

A charge controller regulates voltage and current from the solar panels to the battery. This prevents overcharging and battery damage. Choose a compatible charge controller based on the solar panel output. Use deep-cycle batteries for energy storage. Options include lead-acid, lithium-ion, or gel batteries.

How do you connect a battery to a solar panel?

Connecting the battery is a crucial step in maximizing the efficiency of your solar panel system. Follow these guidelines to ensure a seamless and safe connection. Use quality cables. Select cables that can handle the system's voltage and current. For most solar panel setups, 10- to 12-gauge wire suffices. Connect the charge controller first.

How to configure a solar charging system

Contact Us

For catalog requests, pricing, or partnerships, please visit:
<https://a-core.pl>