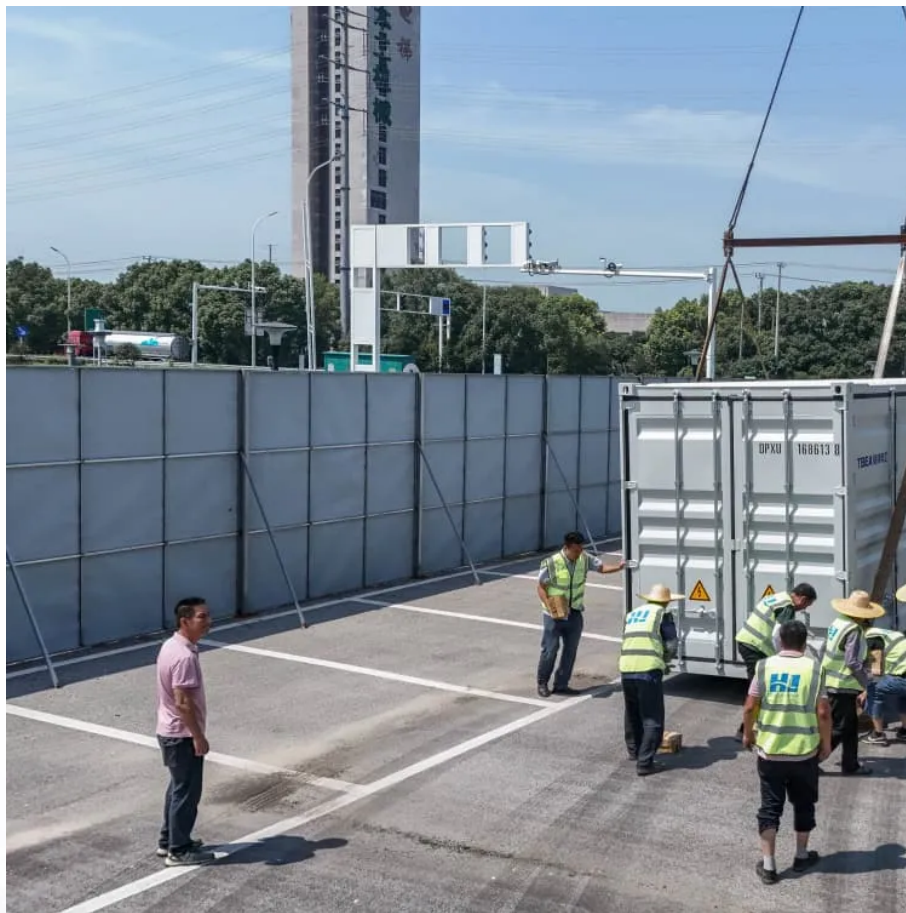


## A-Core Container

# How to install batteries for communication base stations



## Overview

---

Telecom battery installation ensures uninterrupted power for communication networks. Key steps include selecting the right battery type (like VRLA or lithium-ion), adhering to safety protocols, proper mounting, and testing.

## How to install batteries for communication base stations

---

## Contact Us

---

For catalog requests, pricing, or partnerships, please visit:  
<https://a-core.pl>