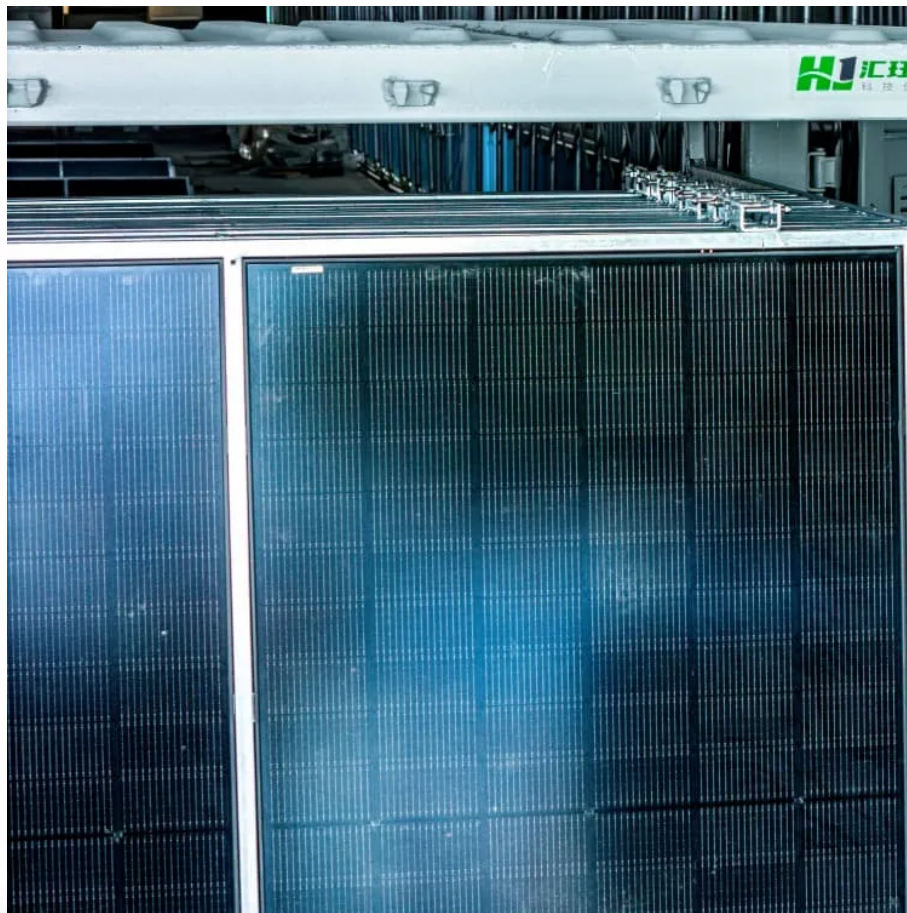


A-Core Container

Huawei solar inverter application



Overview

With the FusionSolar Application, installers and owners can view the operating status, real-time and historical data of the plant and energy production & consumption management. What is the Huawei inverter app?

The Huawei inverter app is an invaluable tool for managing and optimizing your solar energy system. By following this guide, you can harness the full potential of your solar investment, ensuring efficient energy production and consumption. Stay connected, informed, and in control with the Huawei inverter app.

How do I install a Huawei inverter?

Follow these steps to get started: Visit the App Store or Google Play Store: Search for “Huawei Inverter” or “FusionSolar.” Download and Install: Click the download button and install the app on your device. Create an Account: Open the app and sign up with your email address or phone number.

Why should you buy a Huawei solar inverter?

Why Choose Huawei?

Huawei is a recognized leader in the solar industry, renowned for its commitment to quality, innovation, and cutting-edge technology. The combination of the SUN2000-115KTL-M2 on-grid inverter and Smart String ESS LUNA2000-215KWH brings together the best of both worlds: efficient energy conversion and advanced energy storage.

How does the Huawei fusion solar inverter work?

The inverter is equipped with advanced smart management capabilities, allowing for real-time monitoring and control through the Huawei FusionSolar app, providing insights into energy production and system performance.

How much does a Huawei inverter cost?

Comprehensive Value Proposition: With residential models starting at €785 and offering 10-year warranties, competitive pricing per kW, and advanced monitoring through the free FusionSolar platform, Huawei inverters deliver exceptional ROI with payback periods of 5-8 years in most markets.

How can Huawei inverters improve roof performance?

Solution: Use Smart Dongle-4G (€205) for cellular connectivity or Smart Dongle-WLAN-FE for wired ethernet connection. Solution: Huawei inverters support short strings of 4 panels minimum, providing flexibility for challenging roof layouts. Solution: Deploy optimizers only on shaded panels, reducing system cost while maintaining performance.

Huawei solar inverter application

Contact Us

For catalog requests, pricing, or partnerships, please visit:
<https://a-core.pl>