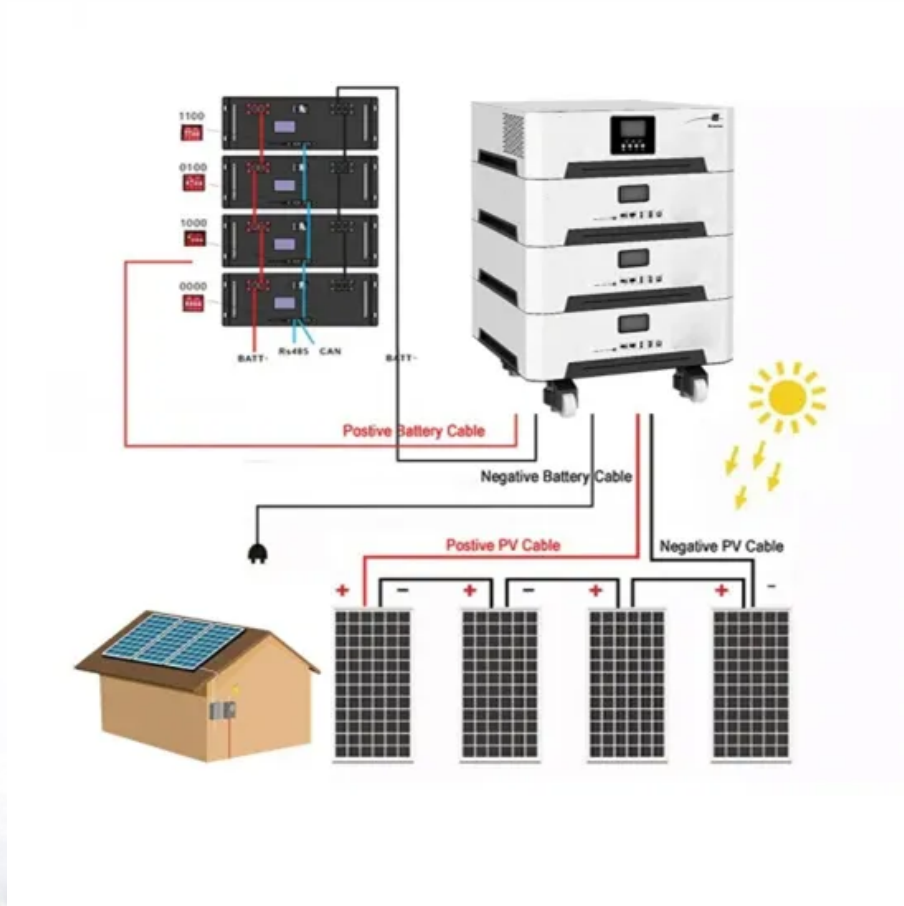


## A-Core Container

# Installation and commissioning of energy storage for communication base stations



## Overview

---

Do energy storage systems need a safety assessment?

**Safety Assessment:** As more energy storage systems have become operational, new safety features have been mandated through various codes and standards, professional organizations, and learned best practices. The design and commissioning teams need to stay current so that required safety assessments can be performed during commissioning.

What is a commissioning plan?

Commissioning is a required process in the start-up of an energy storage system. This gives the owner assurance that the system performs as specified. A Commissioning Plan prepared and followed by the project team can enable a straightforward and timely process, ensuring safe and productive operation following handoff.

Which components of a battery energy storage system should be factory tested?

Ideally, the power electronic equipment, i.e., inverter, battery management system (BMS), site management system (SMS) and energy storage component (e.g., battery) will be factory tested together by the vendors. Figure 2. Elements of a battery energy storage system.

What is a commissioning process?

Commissioning is a gated series of steps in the project implementation process that demonstrates, measures, or records a spectrum of technical performance and system behaviors. This chapter provides an overview of the commissioning process as well as the logical placement of commissioning within the sequence of design and installation of an ESS.

Do energy storage subsystems have to pass a factory witness test?

Each subsystem must pass a factory witness test (FWT) before shipping.

(Note: The system owner reserves the right to be present for the factory witness test.) This is the first real step of the commissioning process—which occurs even before the energy storage subsystems (e.g., power conditioning equipment and battery) are delivered to the site.

Why do design & commissioning teams need to stay current?

The design and commissioning teams need to stay current so that required safety assessments can be performed during commissioning. Safety assessments must include all appropriate documentation, indicating which safety-related functions were checked, since not all failure-related tests can be performed without damage to the system.

## Installation and commissioning of energy storage for communication

---

### Contact Us

---

For catalog requests, pricing, or partnerships, please visit:  
<https://a-core.pl>