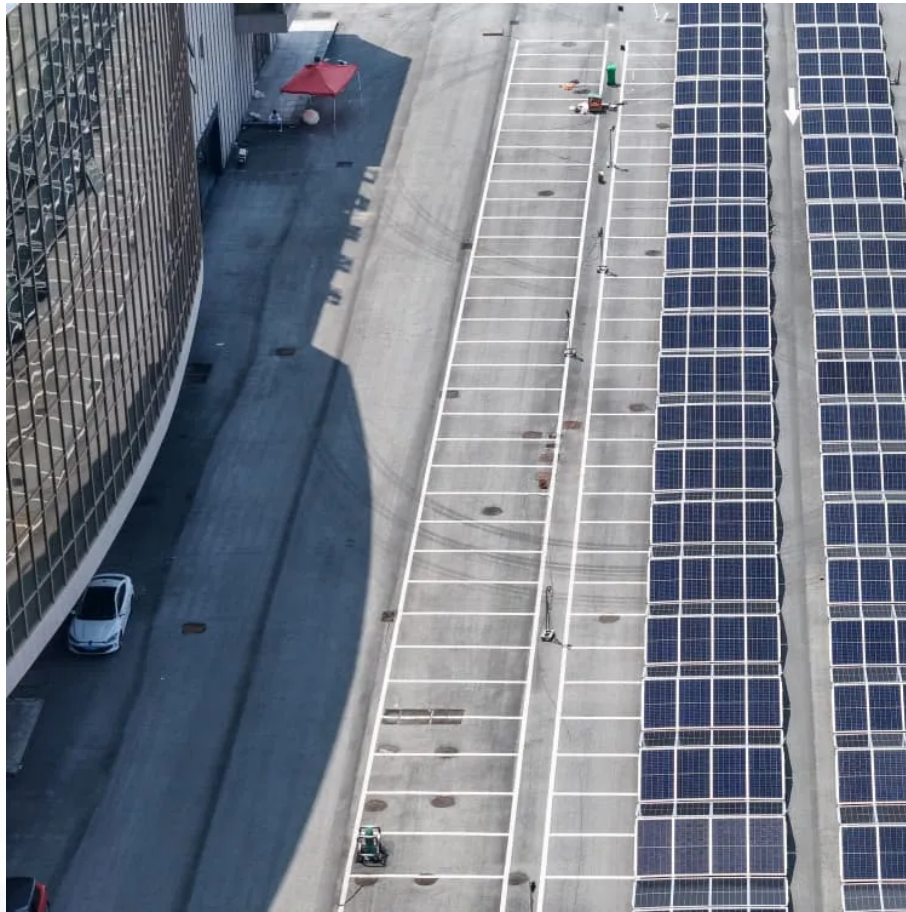


A-Core Container

Is grid-connected solar inverter useful



Overview

They not only convert the direct current (DC) generated by solar panels into alternating current (AC), but also feed the excess power back to the grid to achieve efficient use of energy. What is a grid connected solar system?

A grid-tied solar system has a special inverter that can receive power from the grid or send grid-quality AC power to the utility grid when there is an excess of energy from the solar system. Figure. Grid-Connected Solar Photovoltaic System Block Diagram.

Do grid-connected PV inverters need a backup?

Answers: Grid-connected PV inverters need to synchronize their output with the utility and be able to disconnect the solar system if the grid goes down.

(1) A system that is designed to supplement grid power and not replace it at any time does not need backup, so installation is simplified.

Does an inverter meet grid standards?

As aforementioned, the inverter is interconnected to the grid, so it should fulfill the grid standards as well. These standards includes power quality, grid ride through capability and islanding prevention . Power quality is mainly measured on the basis of Power Factor (PF) and Total Harmonic Distortion (THD).

What is a grid connected inverter (GCI)?

2024, Renewable and Sustainable Energy Reviews Valeria Boscaino, . Dario Di Cara Although the main function of the grid-connected inverter (GCI) in a PV system is to ensure an efficient DC-AC energy conversion, it must also allow other functions useful to limit the effects of the unpredictable and stochastic nature of the PV source.

What is an on-grid inverter?

Unlike off-grid or hybrid systems, on-grid inverters are designed to work in

sync with the public electricity grid. Their job is to convert the DC (direct current) electricity generated by solar panels into AC (alternating current) power that can either be: 1. Used directly by your home or business, 2.

Are grid-connected inverters stable in unbalanced grid conditions?

Abstract: Grid-connected inverters play a pivotal role in integrating renewable energy sources into modern power systems. However, the presence of unbalanced grid conditions poses significant challenges to the stable operation of these inverters.

Is grid-connected solar inverter useful

Contact Us

For catalog requests, pricing, or partnerships, please visit:
<https://a-core.pl>