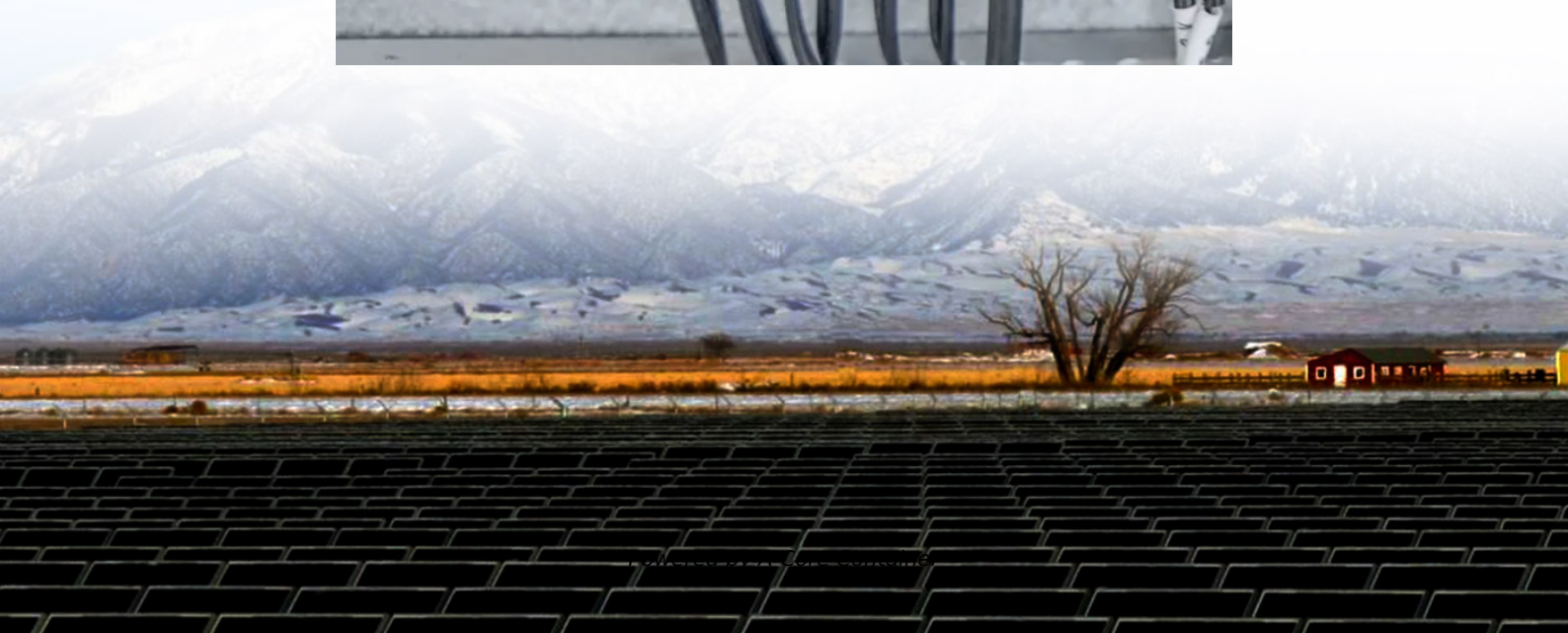
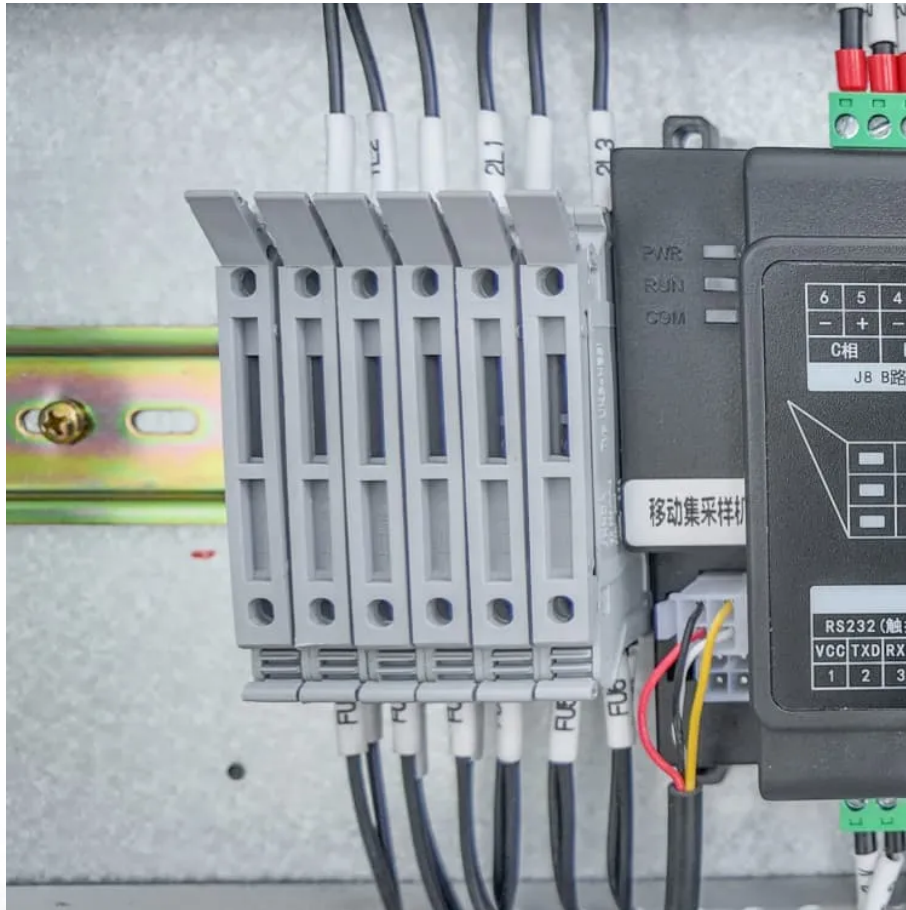


## A-Core Container

# Is it okay to install solar panels on the roof ridge



## Overview

---

Before installing solar panels over ridge cap shingles, it is critical to assess your roof's structure. An experienced solar installer should inspect the roof to ensure it can support the additional weight of the panels without compromising the integrity of the.

Before installing solar panels over ridge cap shingles, it is critical to assess your roof's structure. An experienced solar installer should inspect the roof to ensure it can support the additional weight of the panels without compromising the integrity of the.

When installing photovoltaic panels on one- and two-family homes, it's important to understand the requirements for access pathways and the requirements for setback from the ridge, which only apply to roofs with a slope greater than a 2-in-12 pitch. Access pathways are intended to provide access to.

Placing PV panels on residential roofs is a balancing act between getting the most possible wattage and creating safe pathways for first responders who may have to climb the roof in an emergency. Synopsis: In this installment of Know the Code, code-expert Glenn Mathewson details the commonly.

However, if you have ridge cap shingles on your roof, you may be wondering if it is possible to install solar panels over them. In this article, we will explore whether or not it is feasible to put solar panels over ridge cap shingles, addressing important considerations and providing insights into.

In most cases, solar panels are required to have a minimum of 18 inches of recoil from the roof ridge and may also require a three-foot path along one of the edges. Once on the ridge, the path must continue along its length to provide access to the cutting openings anywhere along the ridge. The.

Professional Installation is Critical for Safety and Warranties: Solar panel mounting involves working at dangerous heights with structural modifications that can void warranties if done incorrectly. Professional installation typically includes 5-25 year warranties and ensures compliance with 2025.

As you're considering making the switch to solar, you may wonder, "Is it safe to have solar panels on my roof?"

" The answer here is almost always yes; however, the following safety considerations should be reviewed to determine the condition of your roof before moving forward. 1. Do your research.

## Is it okay to install solar panels on the roof ridge

---

### Contact Us

---

For catalog requests, pricing, or partnerships, please visit:  
<https://a-core.pl>