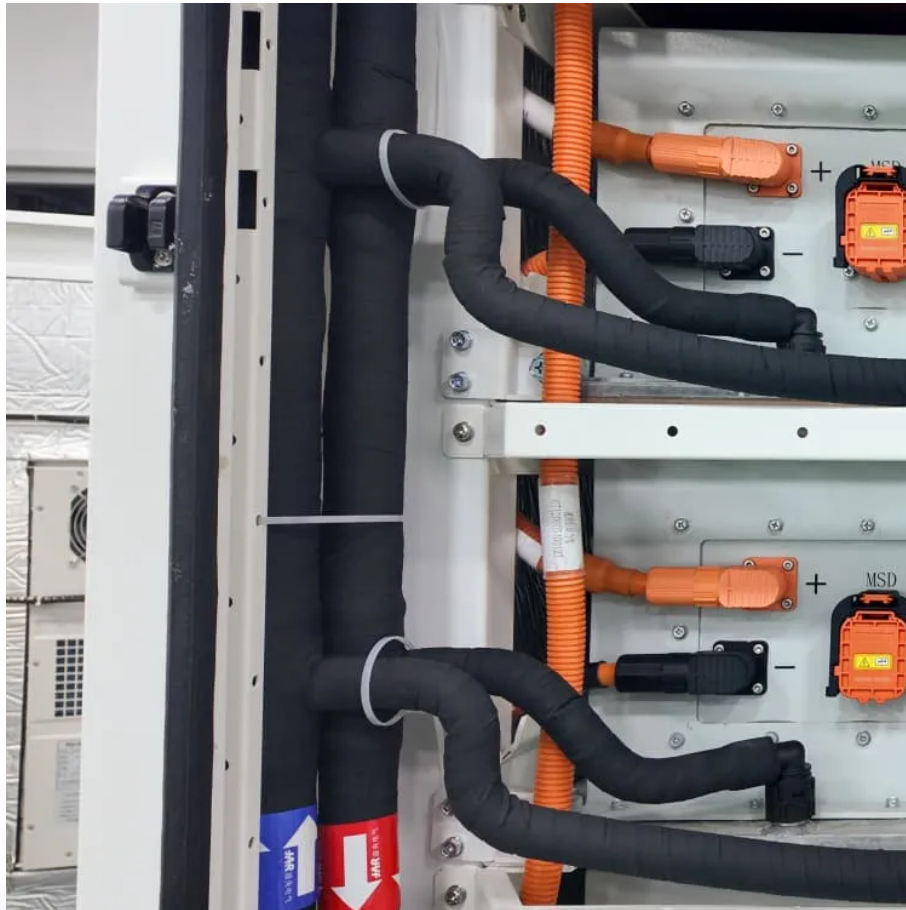


A-Core Container

Lebanon Station Energy Storage Power Station Battery



Overview

In March 2025, a 50MW/200MWh flow battery system began powering 18,000 homes – sort of a prototype for national deployment. Key metrics: Lebanese engineers have pioneered modular battery designs that thrive in high-humidity environments. Their secret sauce?

Lebanon Station Energy Storage Power Station Battery

Contact Us

For catalog requests, pricing, or partnerships, please visit:
<https://a-core.pl>