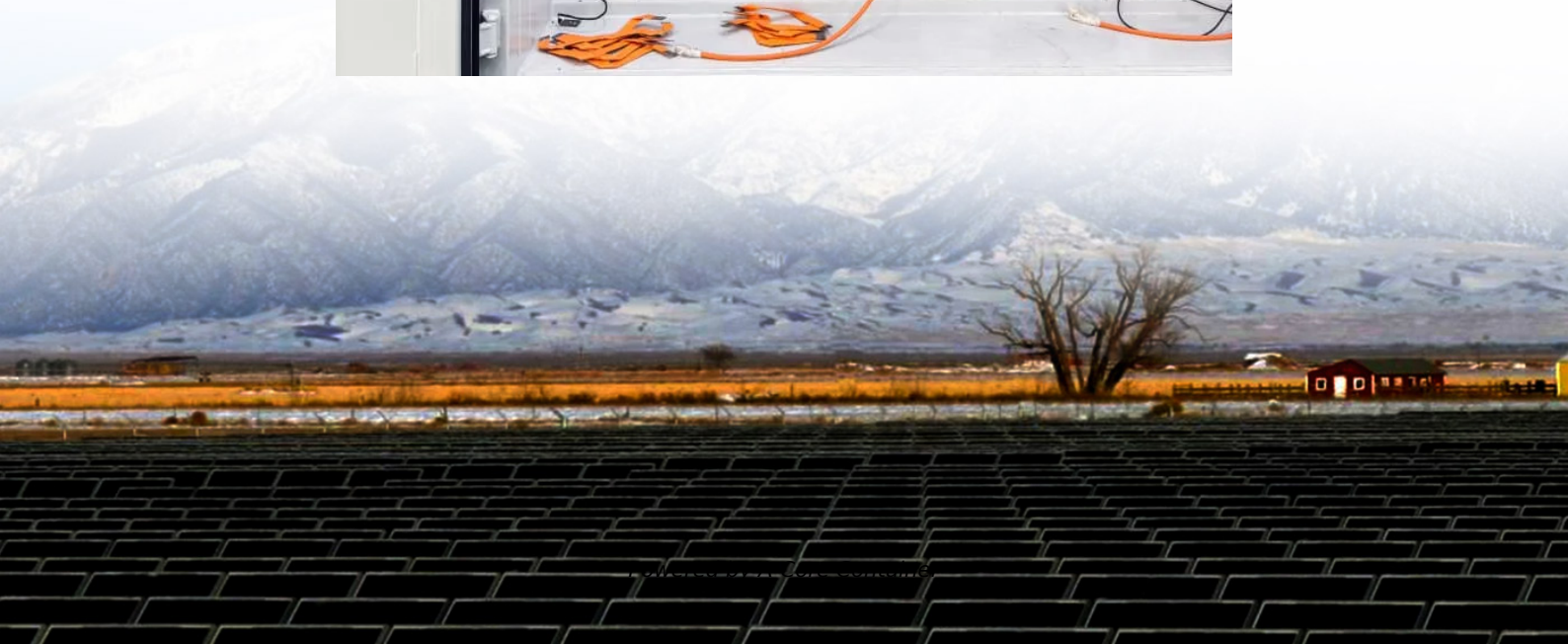


## A-Core Container

# Mobile outdoor power supply storage capacity



## Overview

---

A power station with a capacity of 300Wh might suffice for light usage, but if you're powering larger appliances, aim for 500Wh or more. Picture yourself on a camping trip. You wouldn't want your station to run out of juice mid-adventure. Port options dictate what devices you can.

A power station with a capacity of 300Wh might suffice for light usage, but if you're powering larger appliances, aim for 500Wh or more. Picture yourself on a camping trip. You wouldn't want your station to run out of juice mid-adventure. Port options dictate what devices you can.

Our new top pick, the Bluetti Elite 200 V2, stood out for its exceptional battery capacity—among the highest of any model we tested that isn't a whole-house unit—plus its rugged build quality and reliable output. It's not the only high-performing option, however. All of the following models make.

The best portable power station keeps you up and running whether you need a power supply unit for camping, traveling, home back-up, or life on the road. Each unit I've selected here accepts both mains and solar charging for those who need reliable off-grid power supply. With over 40 top-rated power.

Portable power stations are essential for outdoor adventures and emergency situations. They offer a convenient way to keep your devices charged and ready. In this ultimate portable power station comparison guide, we will compare various models to help you find the best one for your needs. With so.

Each model is required to have a rated battery capacity of at least 300 watt-hours (Wh), which allows you to run a 300-watt appliance for one hour. Each model needs a max output rating of 200 W or more, letting you charge a high-power device or a few low-power devices at once. Each model must weigh.

This guide provides a comprehensive framework for selecting the ideal portable power station, focusing on critical factors like battery capacity, charging capabilities, and solar integration. Whether you're a remote worker, outdoor enthusiast, or preparing for emergencies, understanding these key.

Our buying guide explains what matters most: battery capacity, weight, ports, and charging options. We tested each unit by running multiple devices simultaneously and tracking actual runtime versus manufacturer claims. The BLUETTI AC180 stands out with its solid 1,152Wh capacity and fast charging.

## Mobile outdoor power supply storage capacity

---

### Contact Us

---

For catalog requests, pricing, or partnerships, please visit:  
<https://a-core.pl>