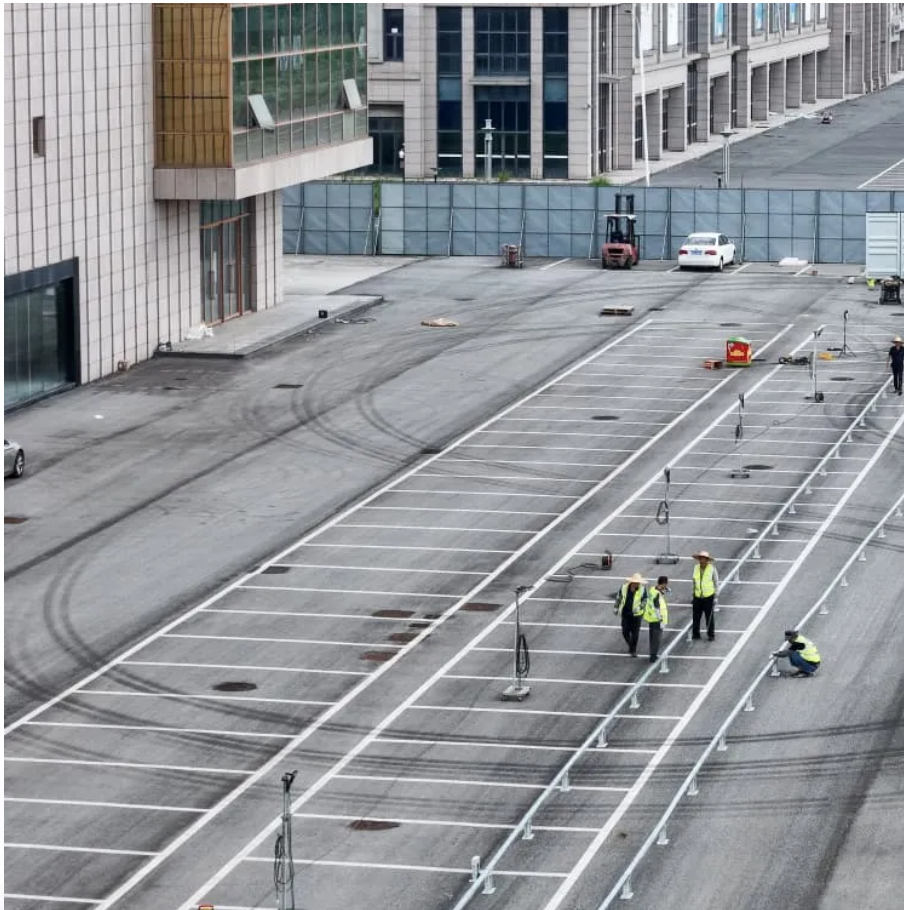


## A-Core Container

# PV grid-connected combiner box model



## Overview

---

What is a PV combiner box?

PV combiner boxes are essential components in solar installations, providing a centralized and organized solution for managing solar connections. They enhance system efficiency, improve safety, and simplify maintenance. When choosing combiner boxes, factors such as capacity, protection rating, and monitoring capabilities should be considered.

What is an off-grid solar combiner box?

Off-Grid Solar Systems In off-grid applications, combiner boxes are crucial for consolidating multiple solar panel outputs into a single DC output that feeds into battery storage systems or DC loads.

What is a combiner box & how does it work?

The combiner box consolidates electrical outputs from multiple solar panel strings into a single output. It includes protective components like fuses, circuit breakers, and surge protection devices. These features safeguard your system from electrical faults and optimize energy transmission.

What are the best practices for a PV combiner box?

To ensure optimal performance and longevity of PV combiner boxes, the following best practices should be followed: Proper Mounting: Install the combiner box in a location that is easily accessible for maintenance and away from direct sunlight or extreme temperatures. Ensure that it is securely mounted to prevent vibrations or movement.

What is a string combiner box?

The string combiner boxes form subsystems that can be standardized according to the number of strings, voltage and rated current. ABB offers different product ranges, each dedicated to specific installation conditions with typical configurations. Main benefits Are you looking for support or

purchase information?

## PV grid-connected combiner box model

---

### Contact Us

---

For catalog requests, pricing, or partnerships, please visit:  
<https://a-core.pl>