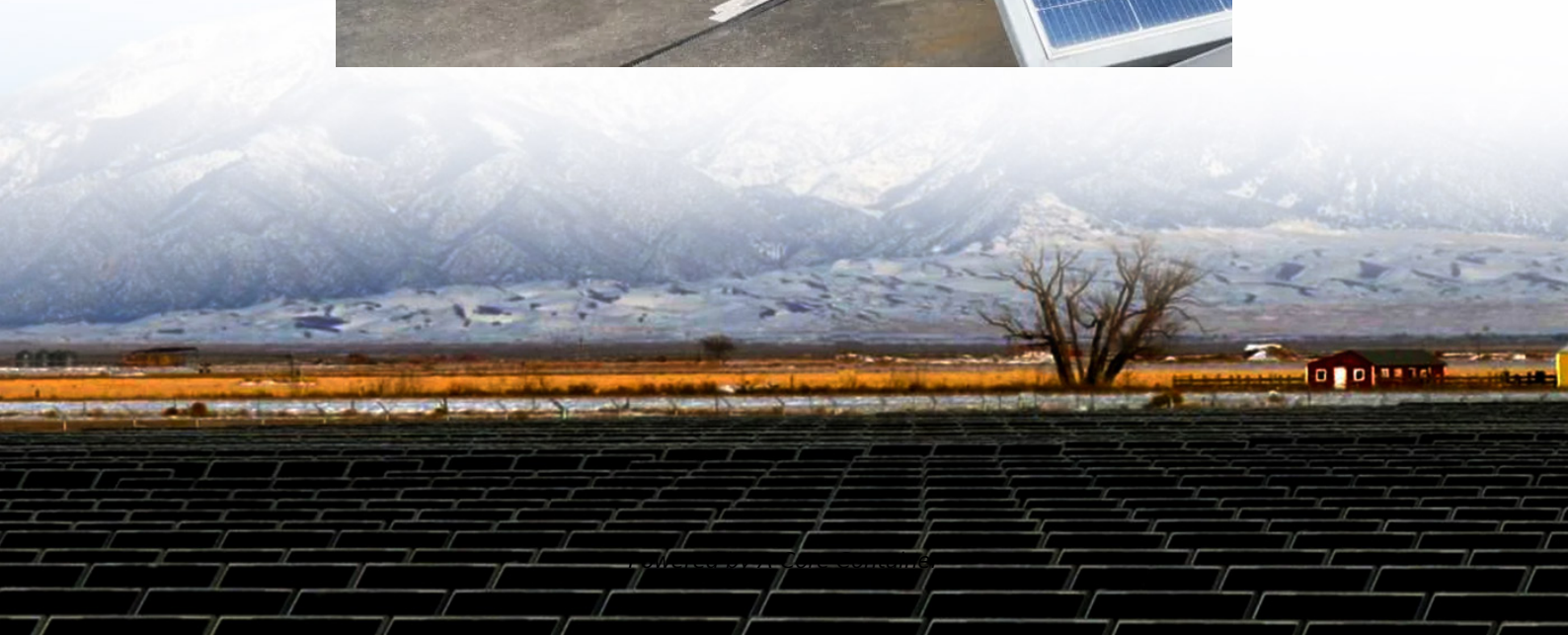


## A-Core Container

# Rooftop solar panels have several specifications



## Overview

---

The size of a solar panel is mainly determined by the number of cells, encapsulation method, and power rating. Currently, the most common monocrystalline modules on the market measure between 1.6–2.3 m in length, 1–1.3 m in width, and about 30–40 mm in thickness.

The size of a solar panel is mainly determined by the number of cells, encapsulation method, and power rating. Currently, the most common monocrystalline modules on the market measure between 1.6–2.3 m in length, 1–1.3 m in width, and about 30–40 mm in thickness.

At the core of these systems are solar plates—commonly known as solar panels—which convert sunlight into electricity. The selection of the right solar panel type depends on efficiency, installation area, budget, and desired output. All solar panels work on the photovoltaic effect. When sunlight.

The Renewable Energy Ready Home (RERH) specifications were developed by the U.S. Environmental Protection Agency (EPA) to assist builders in designing and constructing homes equipped with a set of features that make the installation of solar energy systems after the completion of the home's.

In the design and installation of photovoltaic systems, calculating rooftop solar panel dimensions is a critical factor that determines the success of a project. With limited roof space, inaccurate measurement and planning may result in insufficient installed capacity, wasted space, and an extended.

Rooftop solar panel installations are becoming increasingly common as people realize their potential to reduce energy costs and contribute to a more sustainable future. Solar panels—made of silicon and other materials that can convert sunlight into power—are typically mounted on the roof of a.

If you want to calculate how many solar panels you can put on your roof, you will obviously need to know the size of a solar panel. Example: 5kW solar system is comprised of 50 100-watt solar panels. Alright, your roof square footage is 1000 sq ft. Can you put a 5kW solar system on your roof?

For.

ar Panels are used to convert solar energy into electr city. Each panel h with a power output of 330W and an al systems, shall be indicated on the construction do uments." "16.12.5.2. Where applicable, sn PV modu es that are empanelled to the ANERT OEM empanelment. The . Polycrystalline solar.

## Rooftop solar panels have several specifications

---

### Contact Us

---

For catalog requests, pricing, or partnerships, please visit:  
<https://a-core.pl>