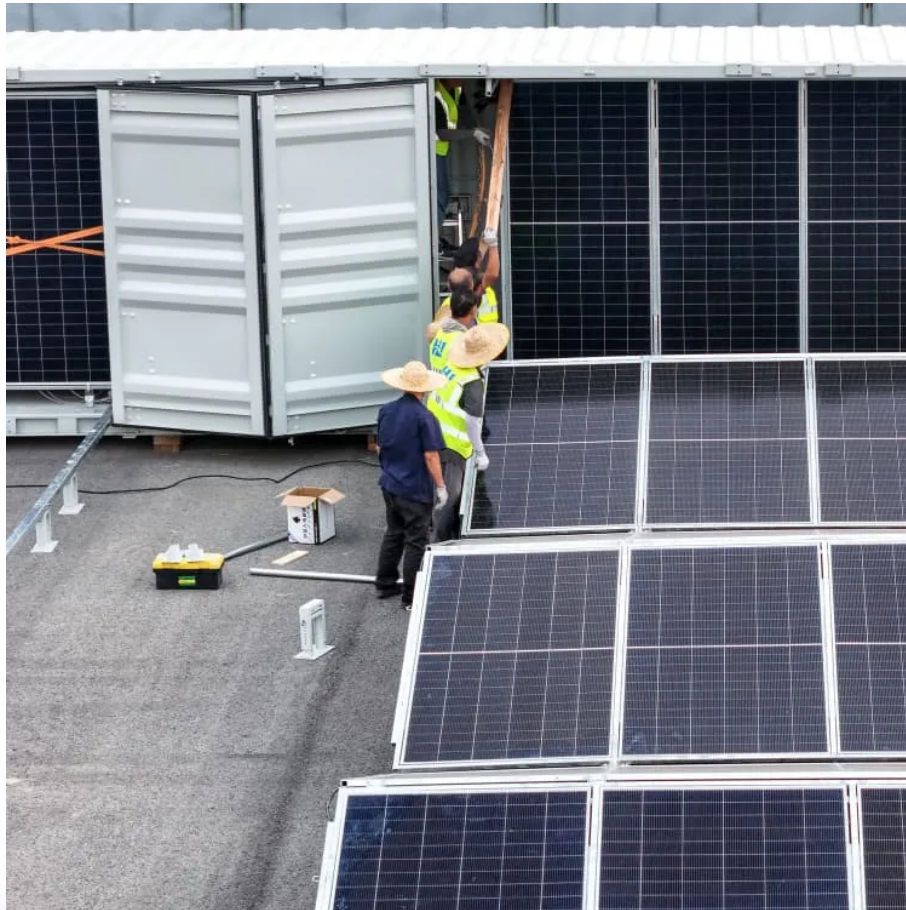


A-Core Container

Rwanda brand inverter pure sine wave



Overview

Should you use a pure sine wave inverter?

With a pure sine wave inverter, you can safely run and charge: Pure sine wave inverters produce stable power with low harmonic distortion you can safely use with medical equipment. Such clean power output buys you peace of mind knowing that your expensive devices are safe from power disruptions.

How much does a sine wave inverter cost?

\$100-\$500 range: This is what you're likely to pay for most pure sine wave inverters on the market. These usually generate between 1,000 and 2,000 watts, so you can use one to power appliances in your off-grid cabin, RV, or boat. \$500 and above: This kind of money will get you a heavy-duty inverter with a power capacity from 3,000 to 12,000 watts.

Are renogy sine wave inverters a good choice?

Their line of pure sine wave inverters is no exception—delivering stable, efficient power conversion that supports off-grid lifestyles without environmental compromise. But Renogy's mission runs deeper than just product performance.

What is the best sine wave inverter?

This 600 watt pure sine wave inverter from GoWISE is one of the more affordable inverters on the market, and designed for use with smaller appliances. With a one year warranty, and the versatility afforded by its 3 AC output sockets (2 regular, 1 USB), it looks to be a pretty promising little unit.

What is a modified sine wave inverter?

Contrary to pure sine wave inverters, modified sine wave inverters only attempt to mimic a sine wave, which can result in regular and bad disruptions to the grid and to your experience. On the other hand, pure sine wave inverters actually produce sine waves, which minimise disruptions, and

maximise efficiency.

How much does a pure sine inverter cost?

If you need a pure sine unit for your car, there are plenty of affordable options in this range. \$100-\$500 range: This is what you're likely to pay for most pure sine wave inverters on the market. These usually generate between 1,000 and 2,000 watts, so you can use one to power appliances in your off-grid cabin, RV, or boat.

Rwanda brand inverter pure sine wave

Contact Us

For catalog requests, pricing, or partnerships, please visit:
<https://a-core.pl>