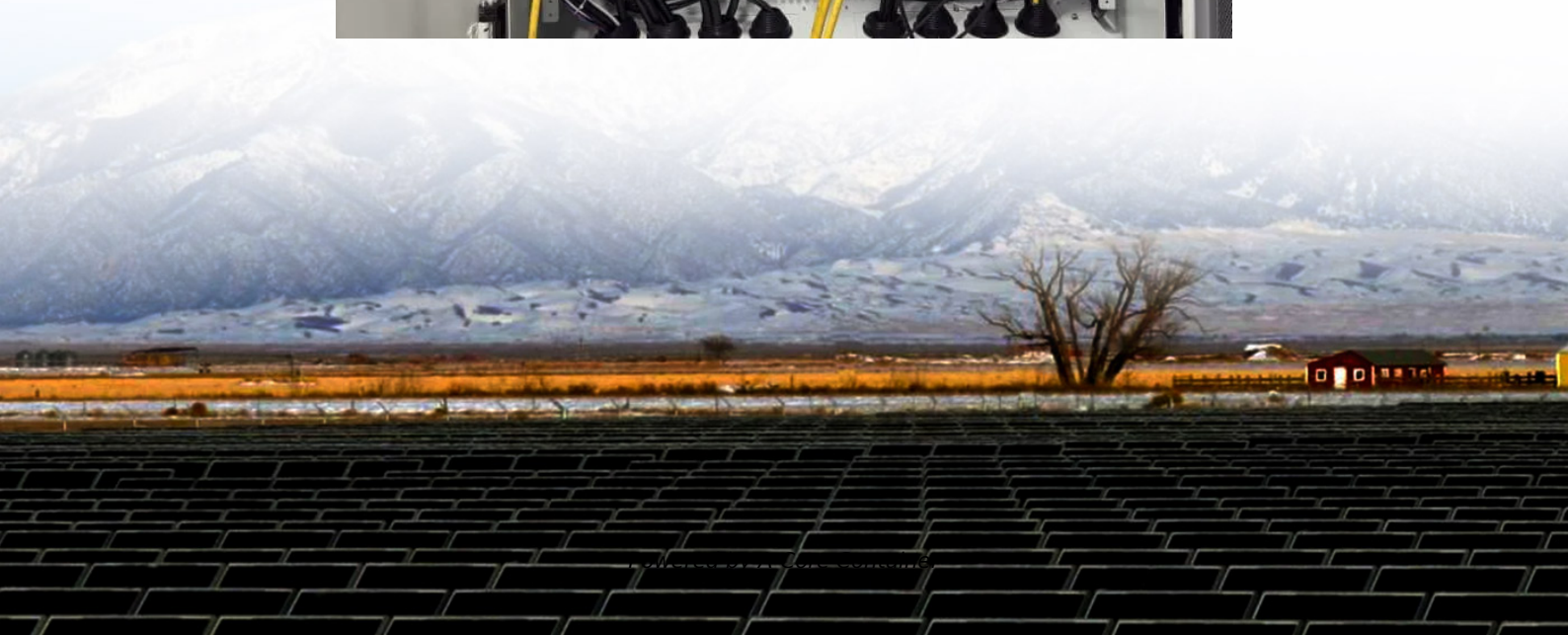
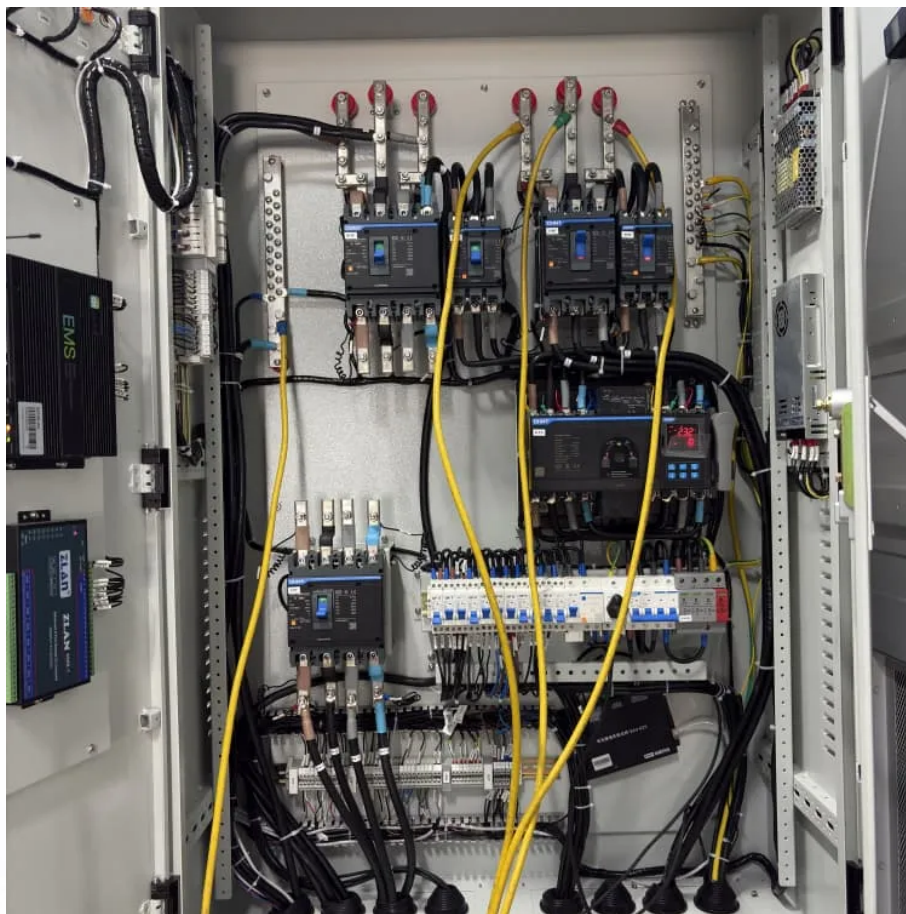


## A-Core Container

# Solar inverter battery topology



## Overview

---

What are the power topology considerations for solar string inverters & energy storage systems?

Power Topology Considerations for Solar String Inverters and Energy Storage Systems (Rev. A) As PV solar installations continue to grow rapidly over the last decade, the need for solar inverters with high efficiency, improved power density and higher power handling capabilities continue to increase.

What are PV inverter topologies?

PV inverter topologies have been extensively described throughout Section 3 with their peculiarities, characteristics, merits and shortcomings. Low-complexity, low-cost, high efficiency, high reliability are main and often competing requirements to deal with when choosing an inverter topology for PV applications.

Should PV inverter topologies be side-stepped?

This paper has presented a detailed review of different PV inverter topologies for PV system architectures and concluded as: except if high voltage is available at input single-stage centralised inverters should be side-stepped, to avoid further voltage amplification.

What are the different types of grid-connected PV inverter topologies?

In the literature, different types of grid-connected PV inverter topologies are available, both single-phase and three-phase, which are as follows: In large utility-scale PV power conversion systems, central inverters are utilised ranging from a few hundreds of kilowatts to a few megawatts.

Why do solar inverters need a power conversion system (PCS)?

As PV solar installations continue to grow rapidly over the last decade, the need for solar inverters with high efficiency, improved power density and higher power handling capabilities continue to increase. Today this is state of

the art that these systems have a power conversion system (PCS) for battery storage integrated.

Do inverter topologies improve power quality?

The latest and most innovative inverter topologies that help to enhance power quality are compared. Modern control approaches are evaluated in terms of robustness, flexibility, accuracy, and disturbance rejection on both the DC and grid sides.

## Solar inverter battery topology

---

## Contact Us

---

For catalog requests, pricing, or partnerships, please visit:  
<https://a-core.pl>