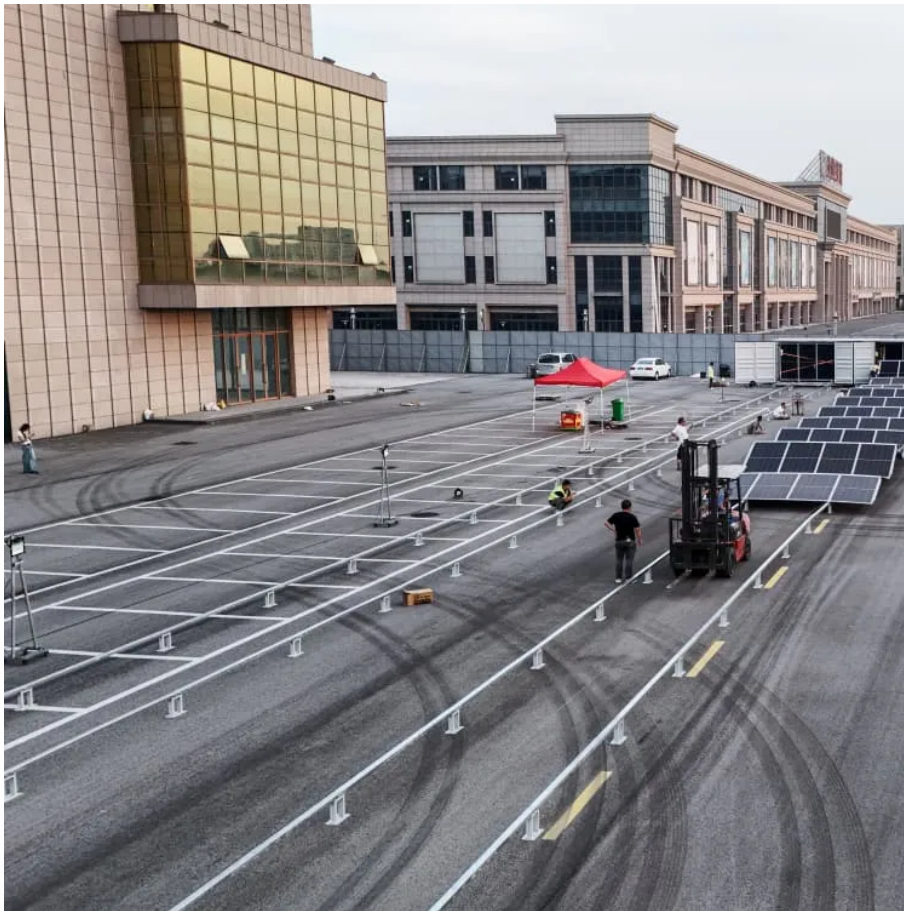


A-Core Container

Solar inverter tracking



Overview

Solar monitoring systems provide a real-time snapshot of solar energy production data from your home solar system. A good monitoring system can tell you when one or more panels (aka “modules”) is.

What is a solar tracking system?

A solar tracking system (also called a sun tracker or sun tracking system) maximizes your solar system’s electricity production by moving your panels to follow the sun throughout the day, optimizing the angle at which your panels receive solar radiation.

Do solar panel installers have a tracking system?

Many solar panel installers add a tracking system in their service bundle. They set up an app that works well with your solar inverter and other parts of your system. Here's when solar installers offer monitoring: Apps From Your Inverter: Inverters like SolarEdge, Enphase, and SMA each come with their own easy-to-use apps.

How can I track my solar energy use?

Track your solar energy use live, getting instant updates on how your system is doing. Dig into past data to identify trends, measure your system's efficiency, and make smart decisions about your energy use. Make graphs and reports that fit your needs, helping you visualize how your system performs over time.

What are the applications of solar tracking system?

The main application of solar tracking system is to position solar photovoltaic (PV) panels towards the Sun. Most commonly they are used with mirrors to redirect sunlight on the panels. Cross-Reference: Design and Implementation of High Efficiency Tracking System.

Are solar monitoring apps good for microinverters?

The Enphase Enlighten app excels in panel-level monitoring and system health

tracking, making it ideal for users with Enphase microinverters. It's user-friendly and delivers crucial insights into energy management. Despite the many benefits of solar monitoring apps, they can have some drawbacks. Here are a few common issues to be aware of: 1.

What is a solar monitoring system?

Solar monitoring systems provide a real-time snapshot of solar energy production data from your home solar system. A good monitoring system can tell you when one or more panels (aka "modules") isn't producing as much energy as others, or whether there's some sort of electrical fault causing you to miss out on precious kilowatt-hours (kWh).

Solar inverter tracking

Contact Us

For catalog requests, pricing, or partnerships, please visit:
<https://a-core.pl>