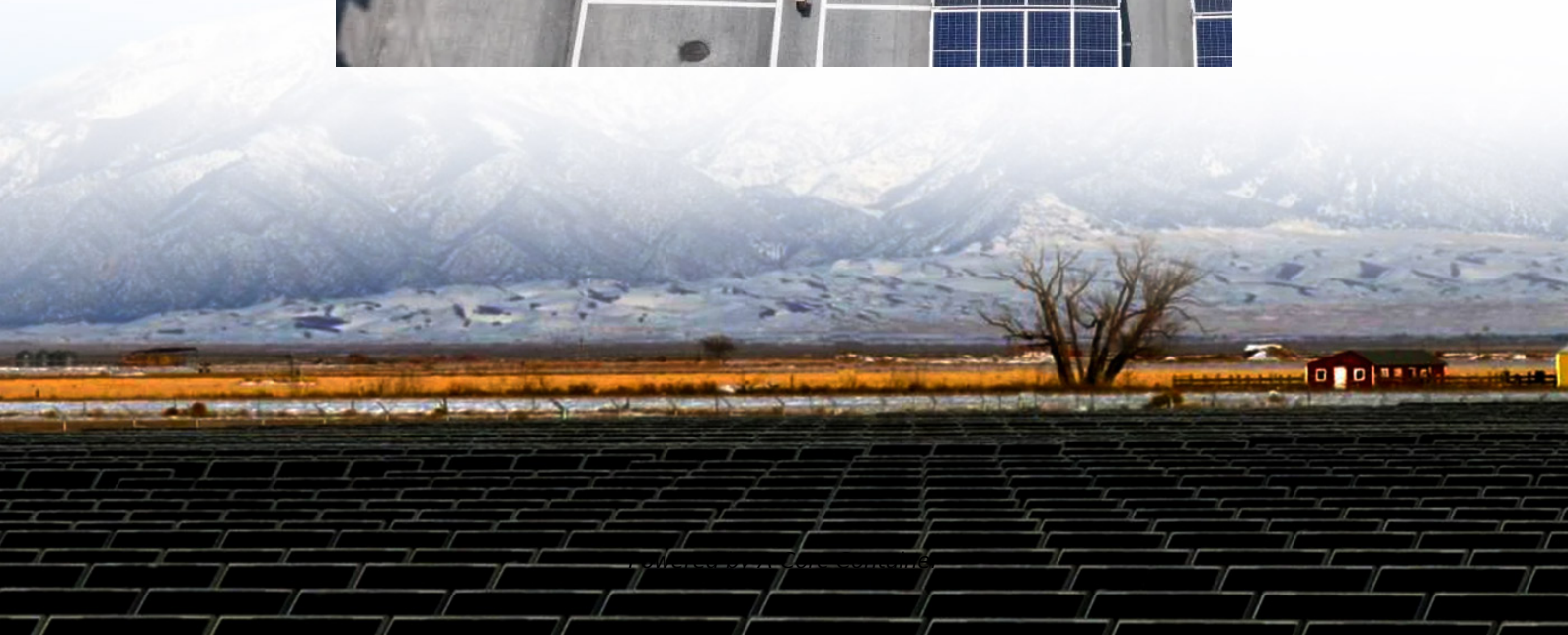
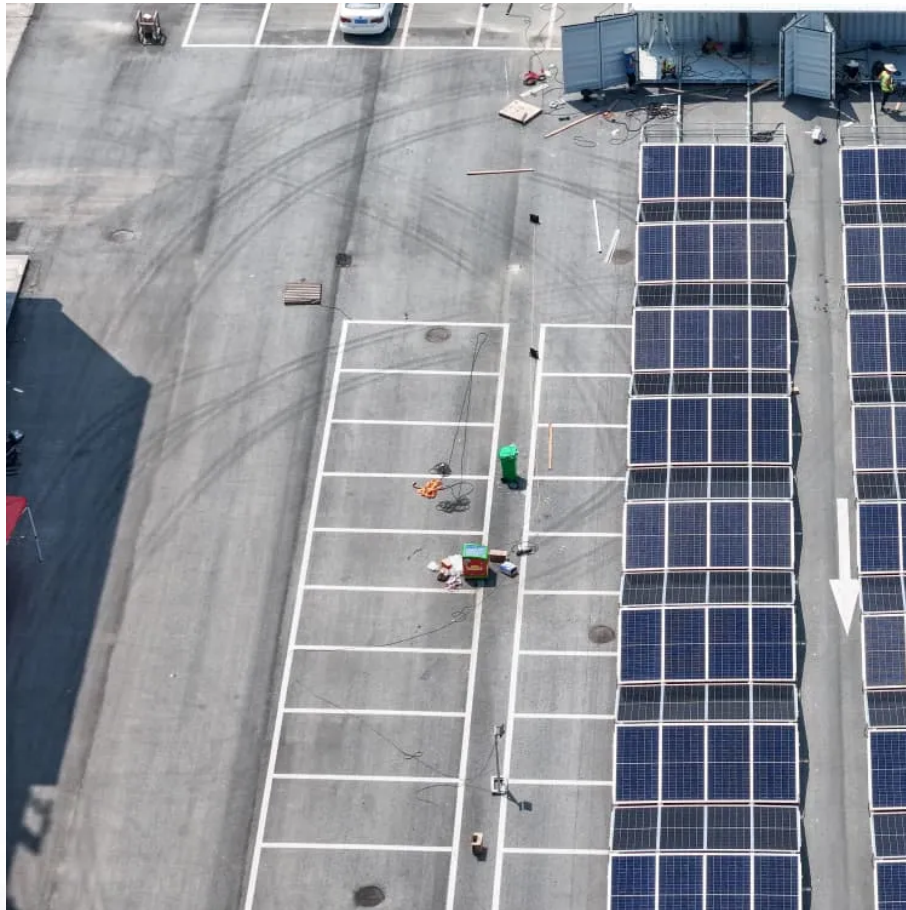


A-Core Container

Specifications and models of explosion-proof solar panels



Overview

In this blog, we'll explore what ATEX and IECEx certified solar panels are, why they are so crucial for hazardous environments, and the specific certifications and safety features that make them different from standard photovoltaic panels.

In this blog, we'll explore what ATEX and IECEx certified solar panels are, why they are so crucial for hazardous environments, and the specific certifications and safety features that make them different from standard photovoltaic panels.

Explosive atmospheres—those that contain flammable gases, vapours, or mist—are particularly dangerous, and it is in these conditions that ATEX and IECEx -certified solar panels are designed to thrive. These specialised solar panels are engineered to prevent becoming a source of ignition, offering.

conditions and requirements for the design and Ex ec mc Solar Panels, which are ATEX and IECEx certified products. They are intended for use in areas made potentially hazardous by the presence of flammable liquids, gas vapours (Zone 1 and Zone 2). Suitable explosion is frequent due to the presence of.

Explosion-Proof LED Lamp: IP66/IK09 aluminum lamp fixture that is anti-corrosion and explosion-proof, equipped with high-efficiency 3030 LED chips delivering 170lm/w and a lifespan of over 100,000 hours. Solar Panel:. Which solar panels are ATEX certified?

JCE Energy manufacture the SPA series of.

Ensuring safety requirements in your hazardous areas (Zone 1 and Zone 2), while providing high performance and durability, that's what the TSM190EX Solar Modules are built for. The ATEX/IECEx certified solar modules protect your employees and your investment, and prove a highly efficient and solid.

All Solar Power Units are designed and built to order, RCP engineers will discuss power requirements and supply voltages with you to ensure that each Solar Power Unit is specified correctly. Environmental specifications may vary

based on your particular application. *AC Solar Power Units are.

Companies operating in locations containing flammable gases, vapor, liquids or in remote locations and areas with extreme climates require equipment that can withstand both the natural and working environment. Minimizing maintenance and operational costs are vitally important to a successful.

Specifications and models of explosion-proof solar panels

Contact Us

For catalog requests, pricing, or partnerships, please visit:
<https://a-core.pl>