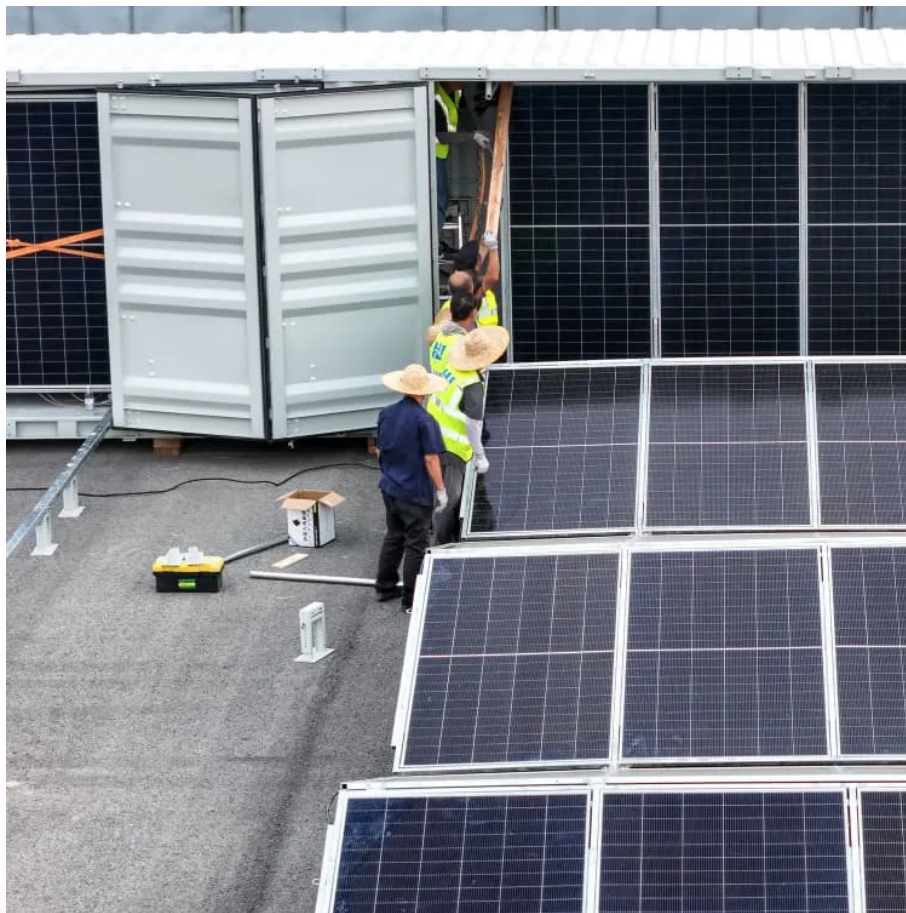


## A-Core Container

# Static balancing of lithium iron phosphate battery pack



## Overview

---

Top balancing and bottom balancing are two strategies used to ensure the cells in a  $\text{LiFePO}_4$  (lithium iron phosphate) battery pack have the same state of charge (SOC) and voltage, which is crucial for maintaining battery health and performance.

## Static balancing of lithium iron phosphate battery pack

---

### Contact Us

---

For catalog requests, pricing, or partnerships, please visit:  
<https://a-core.pl>