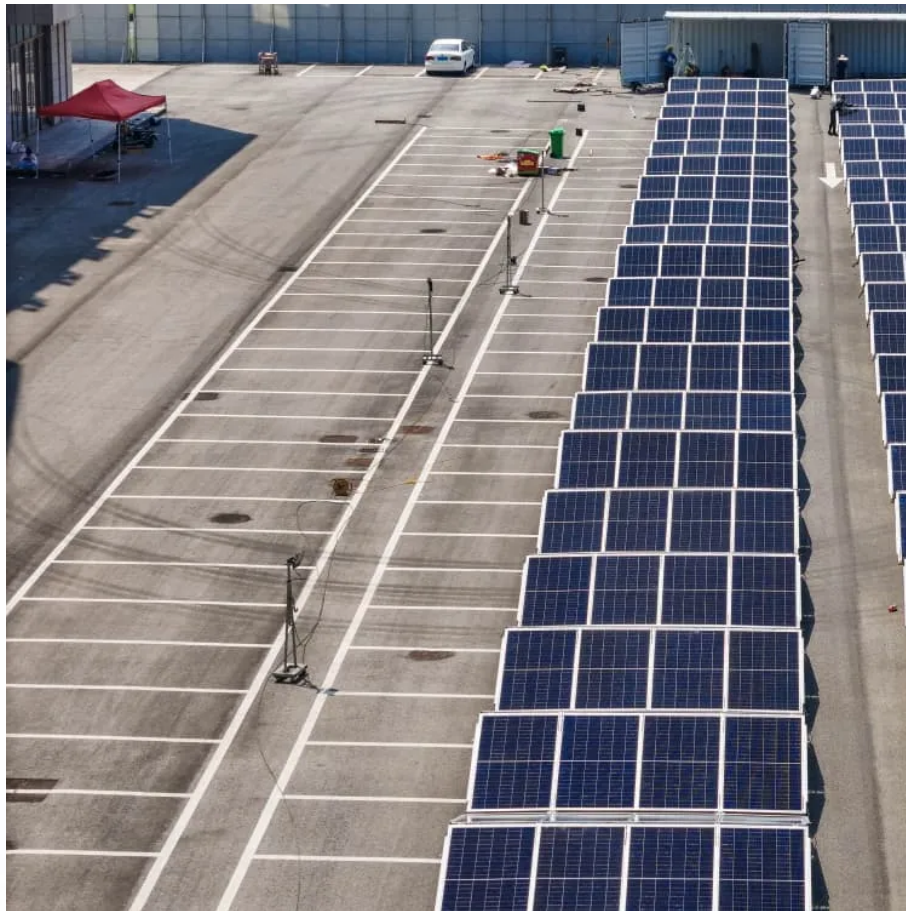


A-Core Container

Swaziland Mobile Power Station



Overview

Does Swaziland have electricity production?

Swaziland has electricity production through its Swaziland Electricity Company, which operates five power stations. Swaziland does not have natural oil or gas reserves, making the country's oil sector heavily dependent on fuel imports from South Africa.

How many hydropower plants does Eswatini have?

The brief highlights that the Eswatini Electricity Company (EEC), a state-owned utility, operates four hydropower plants with a combined capacity of 60.4 MW, meeting 15-17 per cent of the country's energy needs. Five independent power producers (IPPs) also contribute around 110 MW using hydro, biomass, and solar PV technologies.

What is Eswatini electricity company's internal generation?

Eswatini Electricity Company's internal generation is a mix of both hydro and solar PV. a) Hydro Power Station The company holds four major hydro power station Edwaleni Power Station ----- 15 MW Maguga hydropower Station ----- 20MW Ezulwini hydropower Station ----- 20MW.

How many MW will the Lubhuku power station use?

Africa-Press – Eswatini. The Lubhuku Power Station in Mpaka, Lubombo Region, is set to begin operation in 2026 with an initial capacity of 150 MW, increasing to 300 MW by 2028. The plant will use coal from local deposits, such as Maloma Coal Mine, which is expected to last 30 years.

Could a 300MW coal thermal plant solve Eswatini's energy security problem?

According to the UN, a seemingly straightforward solution to Eswatini's energy security dilemma is constructing a 300MW coal thermal plant. This facility could effectively meet the country's baseload power requirements.

How much electricity does Eswatini need?

However, over 80 per cent of Eswatini's electricity is imported, mainly from South Africa's ageing coal-fired plants, leaving Eswatini vulnerable to price fluctuations and supply disruptions due to the neighbouring country's unreliable power supply. Therefore, access to electricity stands at 85 per cent, with a current demand of 233 MW and growing.

Swaziland Mobile Power Station

Contact Us

For catalog requests, pricing, or partnerships, please visit:
<https://a-core.pl>