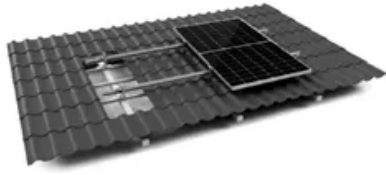


## A-Core Container

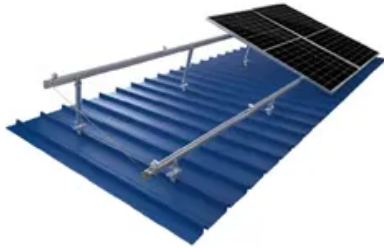
# Türkiye Base Station Energy Management System Power Generation



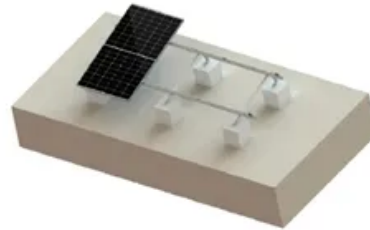
TILE ROOF SOLAR MOUNTING SYATEM



STANDING SEAM ROOF SYSTEM



ADJUSTABLE TILT FLAT ROOF SYATEM



TRIANGLE FLAT ROOF SYSTEM



## Overview

---

What type of energy does Türkiye generate?

Approximately 56% of Türkiye's electric power generation capacity consist of renewable energy, including hydroelectric, wind, solar, geothermal, and biomass power plants, making Türkiye the fifth-largest generator of renewable energy in Europe and the 11th largest in the world.

What is the installed capacity of Türkiye?

By the end of September 2025, the installed capacity of Türkiye has reached 121,418 MW. As of the end of September 2025, the distribution of installed capacity by resources is as follows: 26.6% hydraulic, 20.2% natural gas, 18.1% coal, 11.7% wind, 19.9% solar, 1.4% geothermal and 2.1% other sources.

How much power will Türkiye have in 2035?

According to Türkiye's 2020–2035 National Energy Plan, Türkiye's power generation capacity will reach 189.7 GW in 2035 (a 79% increase from 2023). Türkiye's share of renewable energy will increase to 64.7% with solar power capacity increasing 432% and wind capacity increasing 158%.

Is Türkiye a regulated electricity market?

Türkiye has a semi-liberalized and moderately regulated market. Energy Exchange Istanbul (EXIST) is Türkiye's electricity spot market, which manages day-ahead and intraday markets where 40% of electricity is traded among 854 market participants. EXIST's website features electricity prices in real time.

How much electricity can a company generate in Turkey?

The Electricity Market Law No. 6446 (EML) provides that the total amount of electricity that an entity can generate through generation companies under its control cannot exceed 20 per cent of the electricity generated in Turkey in the preceding year.

What is the price guarantee for unlicensed electricity generation facilities?

Unlicensed electricity generation facilities are subject to a price guarantee different than the feed-in tariffs. It is the retail single-time active energy price for the specific subscriber group of their consumption facility, as announced by EMRA in Turkish lira per kilowatt-hour.

## Türkiye Base Station Energy Management System Power Generation

---

### Contact Us

---

For catalog requests, pricing, or partnerships, please visit:  
<https://a-core.pl>