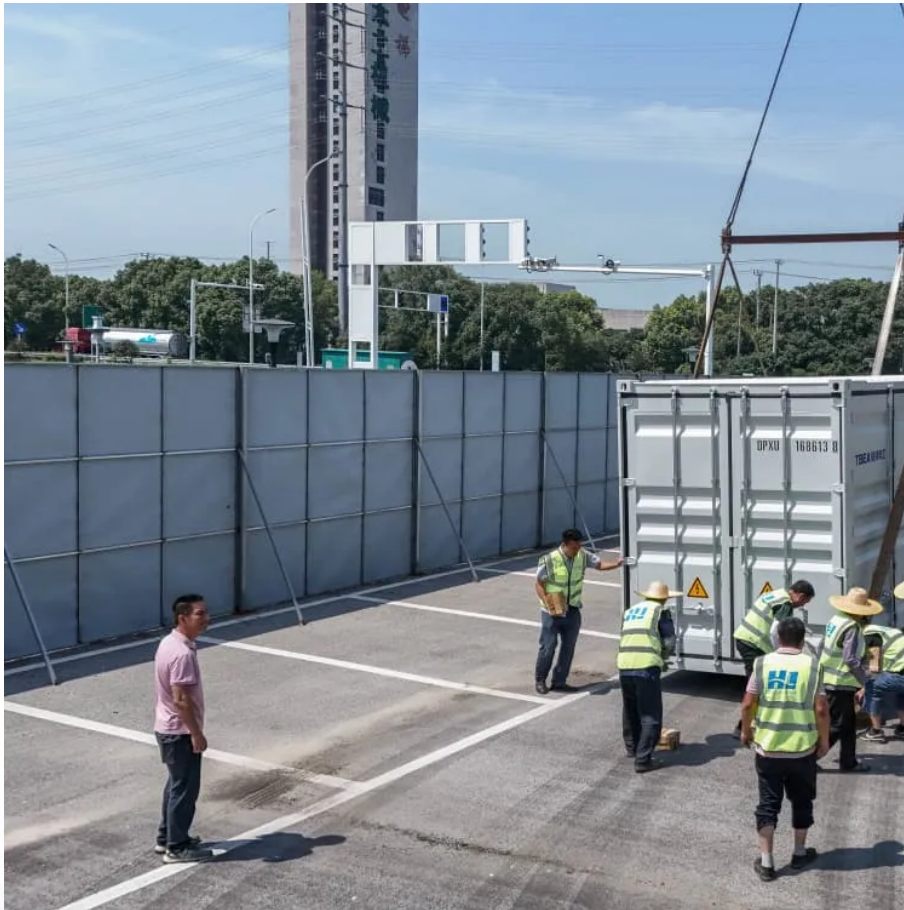


A-Core Container

What does solar energy storage peak shaving mean



Overview

With peak shaving, a consumer reduces power consumption (“load shedding”) quickly and avoids a spike in consumption for a short period. This is either possible by temporarily scaling down production, activating an on-site power generation system, applying energy shifting, or relying.

With peak shaving, a consumer reduces power consumption (“load shedding”) quickly and avoids a spike in consumption for a short period. This is either possible by temporarily scaling down production, activating an on-site power generation system, applying energy shifting, or relying.

Peak shaving in solar is a strategy that helps reduce energy costs by managing peak demand periods. Solar system owners can optimize their energy consumption and lower their electricity bills by understanding and implementing peak shaving techniques. Peak shaving in solar involves actively managing.

By storing power during off-peak hours, peak shaving with battery storage can significantly reduce your energy bills. Wondering how you can benefit?

Our guide will cover: Is peak shaving right for your home?

By the end, you’ll understand how to leverage peak shaving in your own home. Get expert.

In an era of rising electricity costs, unpredictable peak demand charges, and growing pressure for energy independence, peak shaving energy storage is no longer a luxury—it’s a necessity. Whether you’re managing a factory’s fluctuating load or trying to optimize your home’s solar setup.

Peak shaving in essence refers to leveling out peak use of electricity by industrial and commercial power consumers. At its core, the primary purpose of Peak Shaving is to help save on the electricity bill. So, how exactly does peak shaving help reduce costs?

To better understand the stakes of peak.

Peak shaving is a strategy that aims to optimise energy usage and reduce costs by utilising energy storage systems. In this blog post, we will explore what peak shaving is and how it can help balance energy demand and supply. Peak shaving is a technique used to manage electricity consumption during.

Peak shaving, or load shedding, is a strategy for eliminating demand spikes by reducing electricity consumption through battery energy storage systems or other means. In this article, we explore what is peak shaving, how it works, its benefits, and intelligent battery energy storage systems.

What does solar energy storage peak shaving mean

Contact Us

For catalog requests, pricing, or partnerships, please visit:
<https://a-core.pl>