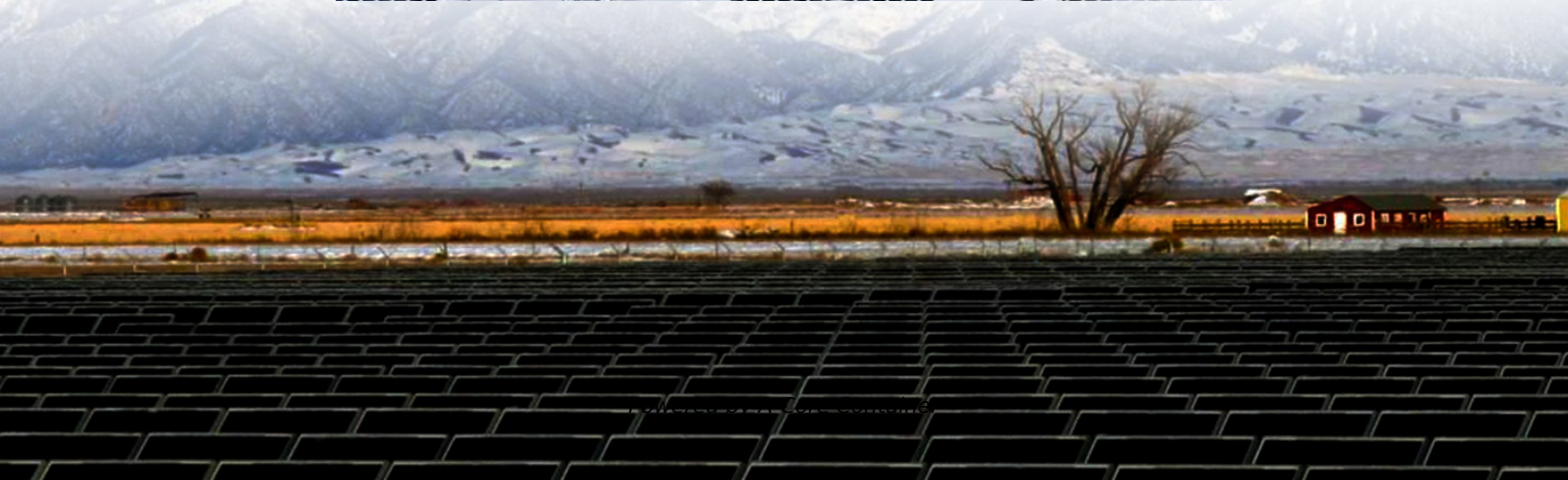
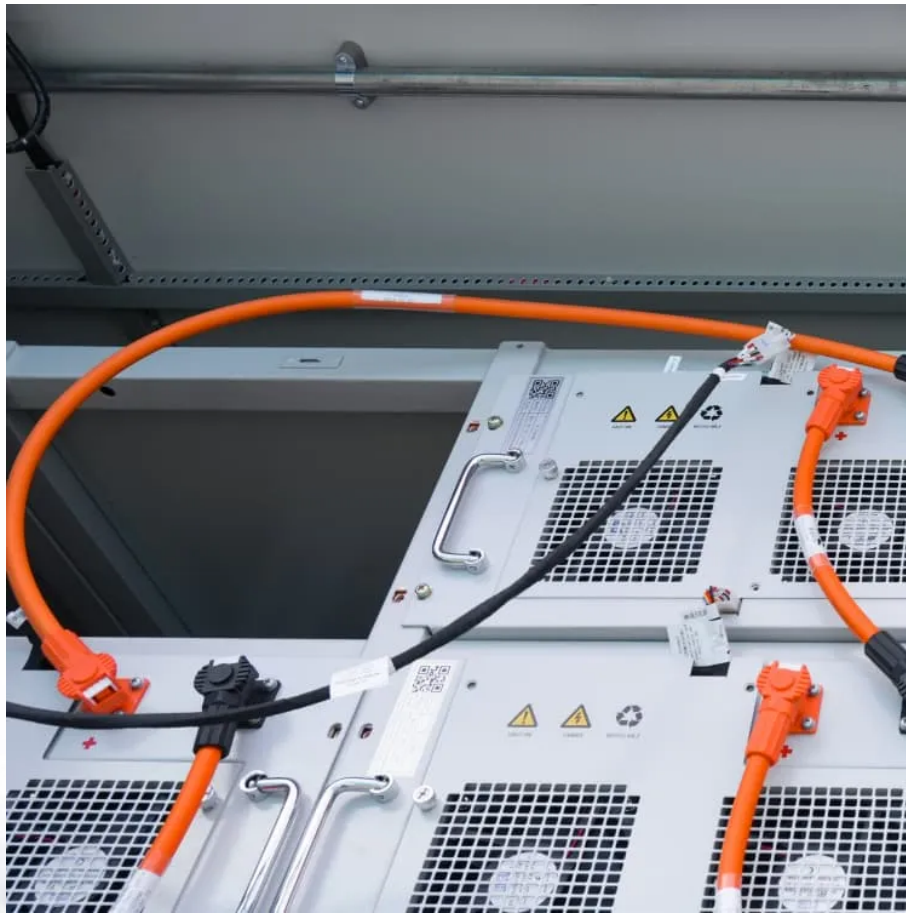


A-Core Container

What is the normal temperature difference of energy storage batteries



Overview

The normal temperature of an energy storage battery typically ranges between 1. 20°C to 25°C, 2. with some variations dependent on battery chemistry, 3. the operational conditions, and 4. the specific application.

The normal temperature of an energy storage battery typically ranges between 1. 20°C to 25°C, 2. with some variations dependent on battery chemistry, 3. the operational conditions, and 4. the specific application.

What is the normal temperature of the energy storage battery?

The normal temperature of an energy storage battery typically ranges between 1. 20°C to 25°C, 2. with some variations dependent on battery chemistry, 3. the operational conditions, and 4. the specific application. Batteries generally.

Optimal Lithium Battery Temperature Range for Performance and Safety
Lithium-ion batteries operate best between 15°C to 35°C (59°F to 95°F) for usage and -20°C to 25°C (-4°F to 77°F) for storage. Maintaining these ranges maximizes efficiency, lifespan, and safety. Exceeding these limits can cause.

For lithium-ion batteries, which are commonly used in modern energy storage systems, the electrolyte can become increasingly viscous at low temperatures, further inhibiting the ion movement necessary for energy transfer. 2. High Temperatures Conversely, high temperatures can accelerate the chemical.

As a reputable energy storage battery supplier, understanding the optimal temperature range for the operation of our batteries is crucial. This knowledge not only ensures the longevity and performance of the batteries but also helps our customers make informed decisions when integrating them into.

2°C and 61°C, you can see a factor of 10 in reaction speed for a difference in temperature of just 19°C! So, temperature is a parameter which must not be neglected when working with batteries. An example for the significance of these effects on real batteries is shown in table 1 (out of an actual.

The optimal temperature range for most battery types, including lithium-ion, is between 20°C and 25°C (68°F to 77°F). This range ensures consistent performance, enhancing reliability and efficiency during use. When planning battery installation, homeowners should focus on several essential factors.

What is the normal temperature difference of energy storage batter

Contact Us

For catalog requests, pricing, or partnerships, please visit:
<https://a-core.pl>