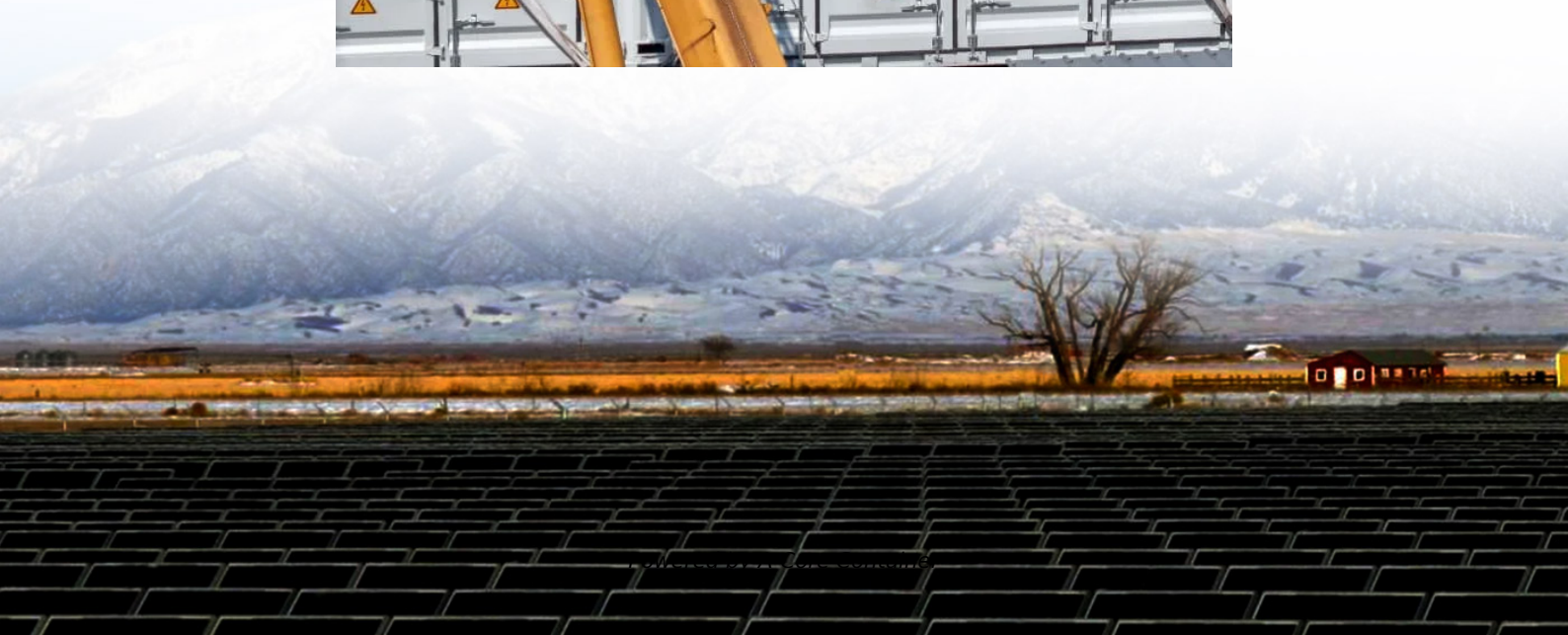
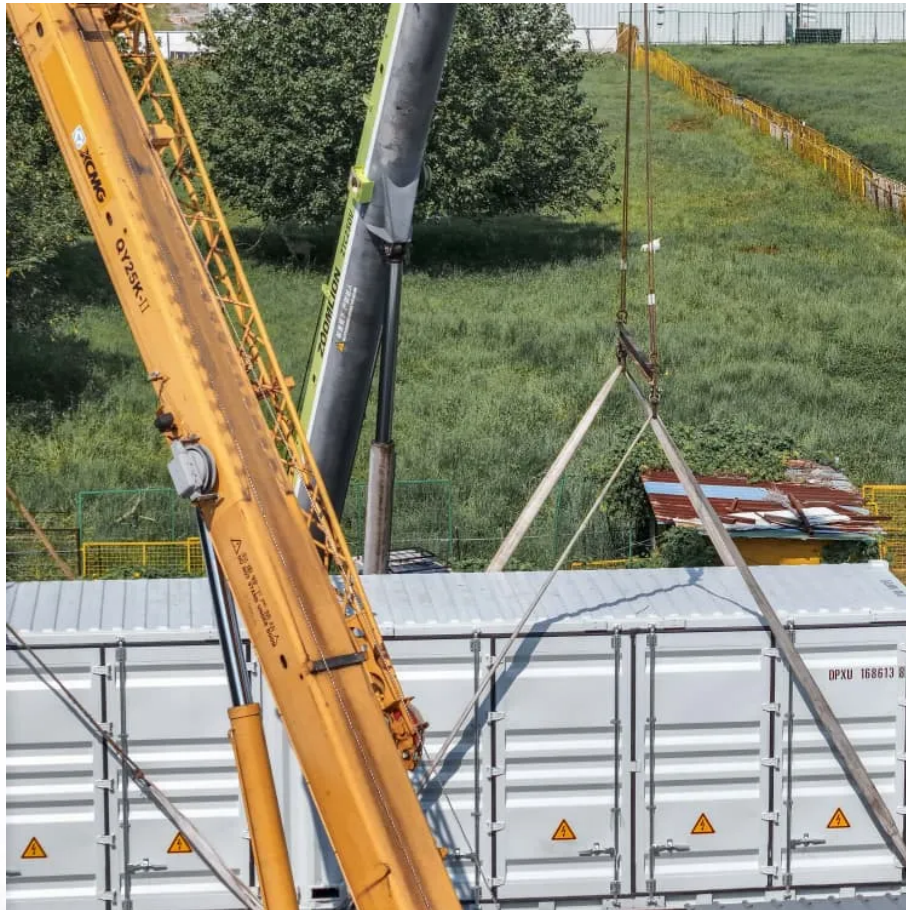


A-Core Container

Wind Solar and Energy Storage Project Plan



Overview

Will hybrid solar & wind projects have integrated battery storage?

As the energy landscape evolves, hybrid solar and wind projects with integrated battery storage are becoming the new standard rather than the exception. Industry analysts estimate that by 2030, more than half of new renewable projects will include some form of energy storage.

What is the integration rate of wind and solar power?

The integration rates of wind and solar power are 64.37 % and 77.25 %, respectively, which represent an increase of 30.71 % and 25.98 % over the MOPSO algorithm. The system's total clean energy supply reaches 94.1 %, offering a novel approach for the storage and utilization of clean energy. 1. Introduction.

Is energy storage based on hybrid wind and photovoltaic technologies sustainable?

To resolve these shortcomings, this paper proposed a novel Energy Storage System Based on Hybrid Wind and Photovoltaic Technologies techniques developed for sustainable hybrid wind and photovoltaic storage systems. The major contributions of the proposed approach are given as follows.

How to optimize energy storage capacity in wind-solar-storage power station?

Based on the actual data of wind-solar-storage power station, the energy storage capacity optimization configuration is simulated by using the above maximum net income model, and the optimal planning value of energy storage capacity is obtained, and the sensitivity analysis of scheduling deviation assessment cost is carried out.

Does compressed air energy storage reduce wind and solar power curtailment?

Compressed air energy storage (CAES) effectively reduces wind and solar

power curtailment due to randomness. However, inaccurate daily data and improper storage capacity configuration impact CAES development.

What are the benefits of energy storage systems?

The introduction of energy storage systems enables internal compensation of power generation from renewable energy sources within the station, enhancing the stability of output power and improving the ability to track the power generation scheduling curve. This allows the station to actively participate in power system scheduling.

Wind Solar and Energy Storage Project Plan

Contact Us

For catalog requests, pricing, or partnerships, please visit:
<https://a-core.pl>